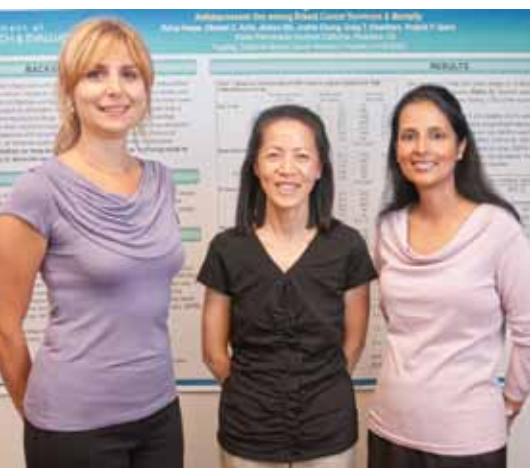


Kaiser Permanente Research



Department of Research & Evaluation

2011 Annual Report



Vision

The Department of Research & Evaluation has an integral role in the success of Kaiser Permanente Southern California by conducting high-quality, innovative translational research that benefits the health of its members and the communities from which they come.

Mission

The mission of the Department of Research & Evaluation is to initiate and conduct high-quality, public-sector health services, epidemiologic, behavioral, and clinical research that has a demonstrable positive impact on the health and well-being of Kaiser Permanente Southern California members and the general population.

Advancing Science, Enhancing Lives

Table of Contents

Director's Message	4
Department Leadership and Staff	6
Research Program Overview	7
2011 Accomplishments	9
Grants and Awards	9
Federal Grant Highlights	10
New Collaborations	11
Industry Contracts	12
Publications	12
Research in the News	13
Faculty Research Programs	16
Research Scientists	16
Post-Doctoral Research Fellows	22
Adjunct Investigators	23
Clinical Trials Research Program	25
Biostatistics, Programming, and Research Database Services	28
Research Support	30
Research Finance	32
Administrative Support Unit	34
Research Information Technology	35
Research Operations	36
Educational Activities	37
Committees	38
Bibliography of 2011 Publications	39



Steve Jacobsen, MD, PhD

Director's Message

The opportunity to do research that makes a real difference in health is one of the most compelling aspects of our program at Kaiser Permanente Southern California. It is not just the integrated care delivery system, or the size and diversity of the population, or the electronic health record. It is what we can do when we bring scientific expertise into this incredibly rich environment, and how we can transform health for the better by linking research to practice.

This opportunity is a powerful recruiting tool, and has propelled our growth as we add to the breadth and depth of our scientific team. In 2011, we recruited four new faculty members: Dr. Michael Gould, Dr. Deborah Young, Dr. Mary Helen Black, and Dr. David Glass. Dr. John Adams, a 2007 American Statistical Association fellow, joined the faculty early in 2012. Their research interests include lung cancer and respiratory disease, physical activity, diabetes, care delivery improvement, and quantitative health research.

Dr. Beth McGlynn, an internationally known expert on health care delivery, took the helm of Kaiser Permanente's new Center for Effectiveness and Safety Research in February 2011. She is based in Pasadena, California.

These researchers didn't come here to make discoveries that may or may not make a difference in health sometime in the next twenty years. They came because they saw an opportunity to use research to improve health in tangible ways today.

Linking Scientific and Clinical Expertise

More and more, scientists and clinicians are collaborating to discover answers to important clinical questions, with the ultimate aim of improving care delivery and health outcomes.

One great example is a new project led by Dr. Ron Loo, a urologist at Downey Medical Center. His study looks at current guidelines for evaluations of patients with one or two occurrences of microscopic hematuria. The study will determine whether current referral guidelines effectively identify patients who need evaluations to detect cancer, or if the guidelines can be modified to reduce radiation exposure and save costs without missing cancers.

The Department of Research & Evaluation continues to expand support for physician research, from administrative support to project consultation. Engaging clinicians in research is a critical component of our strategy to tighten the links between science and operations as we grow our research program.

Part of that strategy is to start the connection between research and practice early, as we generate ideas for new projects. In 2011, Southern California researchers embarked on half a dozen projects that address questions arising directly from clinical practice. Researchers are uncovering the risk factors for amputation in patients with diabetes, exploring the relationship between hypertension control and chronic kidney disease, and assessing the effectiveness of computerized decision-support tools in predicting cardiovascular disease outcomes.

"Great researchers come here because they see an opportunity to use research to improve health in tangible ways today."

Building a Transformational Research Program

The real-world focus of our research portfolio makes Kaiser Permanente Southern California attractive to external funders. Scientists from the Department of Research & Evaluation obtained federal grants for several new projects in 2011, including two R01 grants and one R21 from the National Institutes of Health. These projects will expand knowledge about shingles, multiple sclerosis, bariatric surgery, and diabetes.

Our researchers have also had increasing success in obtaining industry funding for research projects. Industry-funded investigations, which include observational studies as well as clinical trials, help us better understand the safety and effectiveness of vaccines, medications, and other treatments we provide to Kaiser Permanente members.

Our work to advance transformational research extends beyond the walls of Kaiser Permanente. Last year, Kaiser Permanente Southern California hosted the first-ever Clinical and Translational Science Partnership Conference in collaboration with the University of Southern California. More than 200 scientists, clinicians, and health care professionals from the Los Angeles area attended the conference, which included panels on childhood obesity, diabetes, cardiovascular disease, mental health, cancer, and infectious disease.

As our researchers discover answers to important health questions, they share their findings with the community through scientific conferences and peer-reviewed publications. Researchers published nearly 300 articles last year on topics related to cancer, cardiology, diabetes, obesity, health services, and maternal-child health.

None of this work would be possible without the research staff. They keep operations moving on a daily basis; they manage research projects, perform statistical analyses, construct computer databases, organize grant submissions, coordinate clinical trials, and troubleshoot computer problems. The staff also builds for the future, advancing our research capabilities through operational improvement efforts and information technology projects.

Looking to the future, I expect 2012 will be another year of impressive achievements. We are expanding our Health Services Research, and are actively recruiting for three new scientist positions by the end of the year. In partnership with the Division of Research in Kaiser Permanente Northern California, we are launching a new research program on genetics, the environment, and health. The department will also continue to improve and expand infrastructure to support translational research at the Region and in the medical centers, so that we can leverage the full potential of our integrated model and turn research into reality for our members and the communities we serve.

Be well and thrive.



Steve Jacobsen, MD, PhD



Left to right: Steve Jacobsen, MD, PhD and Sac Carreathers.

Department Leadership

Director of Research Steven Jacobsen, MD, PHD, and Director of Research Administration Sac Carreathers work in partnership to lead a team of more than 200 people at the Department of Research & Evaluation.

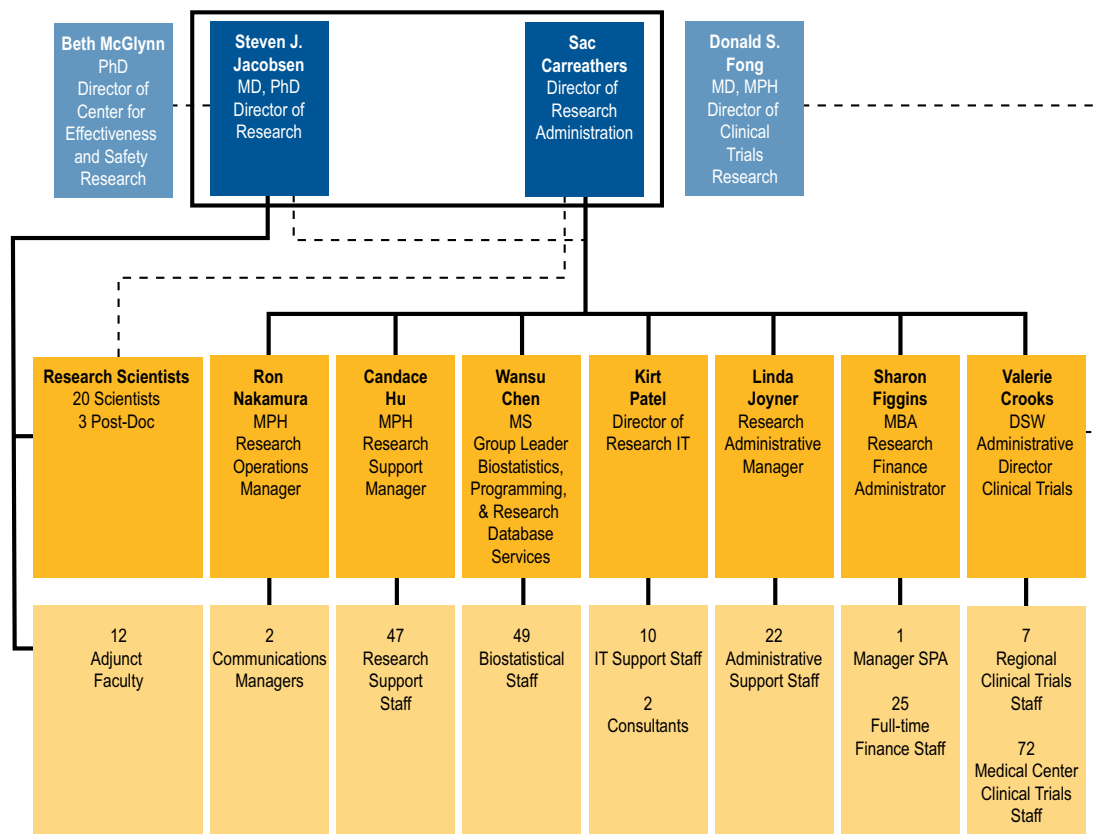
Dr. Jacobsen has overall responsibility for the research enterprise in Kaiser Permanente Southern California. He leads the Department of Research & Evaluation's scientific team, which includes about two dozen researchers. Dr. Jacobsen also serves as a liaison with funders, university investigators, and research networks.

Sac Carreathers oversees the department's business units. His responsibilities include day-to-day operations management and long-term strategic planning. In his capacity as the regional Research Integrity Officer, he oversees compliance with federal regulations and institutional policies.

Department Staff

The department consists of the following teams: Research Scientists; Biostatistics, Programming, and Research Database Services; Clinical Trials; Research Support; Research Finance; Research Information Technology; Research Operations; and Administrative Support.

Department of Research & Evaluation January 2012



Research Program Overview

Kaiser Permanente Southern California's research program emphasizes clinical, epidemiological, behavioral, as well as health services research. The Department of Research & Evaluation's faculty has expertise in the following areas:

- Aging.
- Cancer.
- Cardiovascular disease.
- Child and adolescent health.
- Comparative effectiveness.
- Diabetes.
- Digestive system disorders.
- Eye research.
- Genetics.
- Gestational diabetes mellitus.
- Health economics.
- Health equity.
- Health informatics.
- Health services.
- HIV/AIDS.
- Injury.
- Kidney diseases.
- Maternal-child health.
- Medication adherence.
- Men's health.
- Mental health.
- Molecular epidemiology.
- Neurological disorders.
- Obesity.
- Pharmacoepidemiology.
- Prevention and behavior change.
- Quality improvement.
- Vaccine safety and effectiveness.
- Violence and abuse.
- Women's health.

Kaiser Permanente Southern California At-a-Glance

(as of January 2012)

Health Plan Members	3.6 million
Staff	60,000
Physicians	5,700
Nurses	20,000
Medical Centers	14
Medical Offices	198



Support for Clinician Research

The Department of Research & Evaluation provides services to Kaiser Permanente Southern California physicians and staff who conduct research. Scientific support services include:

- Critiquing hypotheses and research questions.
- Assisting with study design and protocols.
- Identifying potential funding sources.
- Guiding study implementation and data collection plans.
- Consulting on statistical methods.
- Performing power and sample size calculation.
- Providing programming and data management services.
- Employing statistical software for data analysis and interpretation of results.
- Formatting, submitting, and tracking manuscripts for publication.

Research Finance provides support for the development and submission of budgets and contracts for grants, as well as fiscal and programmatic management of internal and external research projects for medical center researchers as well as scientists within the Department of Research & Evaluation.

Regional Research Committee

The Regional Research Committee provides funding for Kaiser Permanente Southern California physicians and staff who want to pursue research. Applicants frequently work with staff from the Department of Research & Evaluation to complete their project.

Each year, the Regional Research Committee recognizes outstanding physician research with the Southern California Permanente Medical Group Research Award. In 2011, that award went to Neal Lonky, MD, an obstetrician-gynecologist from Orange County.

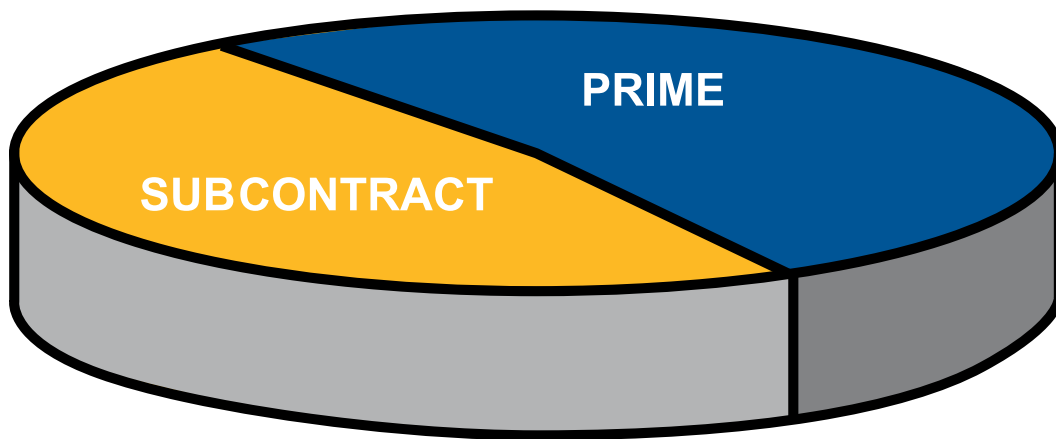
2011 Accomplishments

Grants and Awards

Kaiser Permanente Southern California received \$19.1 million in new grant and contract awards in 2011. These awards, which include federal grants and industry contracts, will fund research at Kaiser Permanente Southern California over a period of years.

The department submitted nearly 320 grant and contract applications in 2011, including more than 180 new submissions and about 130 renewals. These applications resulted in more than 210 awards as of year-end. Kaiser Permanente Southern California was the lead institution on more than 50 percent of all the grants submitted in 2011, up from 42 percent in 2010.

Prime vs. Subcontract Grant Proposals



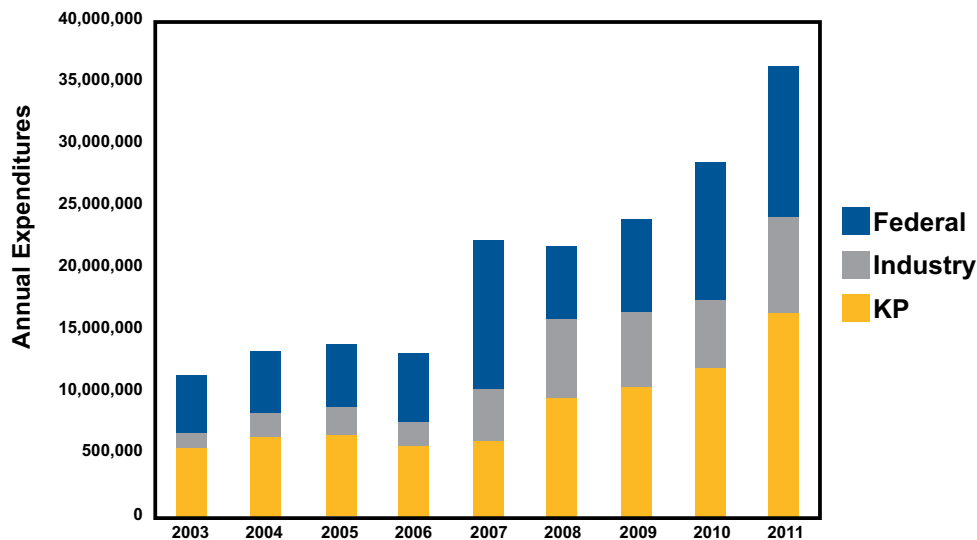
More than 50 percent of all proposals submitted in 2011 included Kaiser Permanente Southern California as the primary institution.



Research Funding

Funding for the Kaiser Permanente Southern California research program has increased substantially during the past decade. Total funding jumped to \$36.5 million in 2011, up from \$28.8 million in 2010. Federal grants contributed \$12.2 million to the total funding. Industry contracts totaled \$7.7 million. Kaiser Permanente provided the remaining funds. Internal funding sources include Kaiser Permanente Community Benefit, the Southern California Permanente Medical Group, the Garfield Memorial Fund, and other sources.

KPSC Research Program Financial Trend



Federal Grant Highlights

Research scientists and physician researchers are principal investigators and co-investigators on research projects funded by the National Institutes of Health, the Centers for Disease Control and Prevention, the Agency for Healthcare Research and Quality, and the Food and Drug Administration. Ongoing federally funded studies seek to expand scientific and clinical understanding of significant health issues including obesity, diabetes, cancer, vaccine safety, and mental health.

The National Institutes of Health awarded several new grants to Kaiser Permanente Southern California in 2011, including two Research Project Grants, or R01s, and an Exploratory/Developmental Research Grant Award (R21).

Vitamin D, Race/Ethnicity, Genotype and Multiple Sclerosis (R01)

Principal Investigator: Annette Langer-Gould, MD, PhD, MS

Funding Agency: National Institute of Neurological Disorders and Stroke

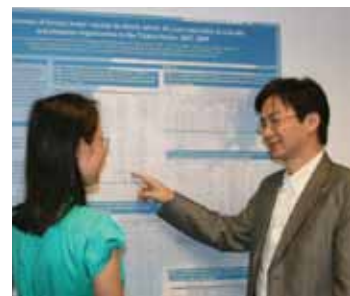
Recent studies suggest that maintaining adequate vitamin D levels can reduce the risk for multiple sclerosis (MS) and lessen the severity of symptoms for people who already have the condition. This study will determine whether a deficiency in vitamin D, or hypovitaminosis D, is a more important risk factor in certain groups of people. In particular, researchers will evaluate whether there are differences among people with darker skin or people with a genetic predisposition to either MS or hypovitaminosis D. Researchers will recruit study participants from Kaiser Permanente Southern California's multiethnic population to address these questions. Findings have the potential to influence guidelines on vitamin D supplementation as a strategy to prevent MS and manage its symptoms.

Zoster Vaccine and Risk Factors of Zoster and Post-Herpetic Neuralgia (R01)

Principal Investigator: *Hung Fu Tseng, PhD, MPH*

Funding Agency: National Institute of Allergy and Infectious Disease

Although the herpes zoster vaccine has been shown to reduce the risk of shingles, some vaccinated individuals still experience outbreaks. This study seeks to understand why the vaccine occasionally fails to prevent shingles. Researchers will explore whether shingles in vaccinated adults is from the Oka strain of the varicella zoster virus—the strain used to produce the vaccine—or if it is a reactivation of wild-type chicken pox. They will also identify risk factors for shingles among vaccinated individuals. Additionally, researchers will study risk factors for post-herpetic neuralgia, a painful complication of shingles that can persist for months after the rash disappears.



Fitness and Exercise for Post-Bariatric Patients (R21)

Principal Investigator: *Karen J. Coleman, PhD, MS*

Funding Agency: National Institute of Diabetes and Digestive and Kidney Diseases

Exercise is an important factor in successful weight loss after bariatric surgery, but individuals who have undergone this procedure often have difficulty adopting and adhering to a fitness program. This study will adapt an exercise program originally developed for people with arthritis, tailoring it to the needs of people who have had bariatric surgery. Researchers will recruit subjects for a six-month exercise program, followed by a six-month maintenance program. They will evaluate the effectiveness of the program, using statistical methods to assess the program's effect on weight loss, fitness, mobility, body image, and exercise enjoyment.

New Collaborations

Researchers also partner with other organizations to extend the impact and value of Kaiser Permanente Southern California's capabilities. Ongoing collaborations include consortiums and research networks studying cancer, diabetes, vaccines, mental health, and cardiovascular health.

Featured Collaboration: Beta-Cell Preservation through Fat Mitigation

Principal Investigator: *Anny Hui Xiang, PhD*

Funding Agency: National Institute of Diabetes and Digestive and Kidney Diseases

Type 2 diabetes occurs when pancreatic beta cells fail progressively over time to produce enough insulin to compensate for chronic insulin resistance. Evidence suggests that obesity and its adverse metabolic effects are primary drivers of insulin resistance and declining beta-cell function. In collaboration with University of Southern California, this project tests whether treatments that mitigate the metabolic effects of obesity may preserve or restore beta-cell function in individuals with pre-diabetes and mild type 2 diabetes. Specifically, researchers will compare the effects of weight loss induced by gastric banding to standard drug treatment (metformin). Researchers will study changes in markers of beta-cell health and learn about the relationship between obesity and beta-cell health. This study is part of the National Institutes of Health RISE (Restoring Insulin SEcretion) consortium, which aims to determine the feasibility of different intervention approaches to preserve beta-cell function in individuals with pre-diabetes or mild diabetes.



Industry Contracts

Pharmaceutical companies and device makers fund clinical trials, feasibility assessments, health economic evaluations, and post-marketing studies at Kaiser Permanente Southern California. Many of these studies pave ways to innovative therapies or treatment protocols for cancer, infectious diseases, and chronic conditions. Others assess the safety and effectiveness of the treatments offered to Kaiser Permanente members.

Featured Contract: Menveo Post-Marketing Safety Study

Principal Investigator: *Hung Fu Tseng, PhD, MPH*

Funding Source: Novartis

This study will evaluate the safety of the meningococcal vaccine, or Menveo vaccine, in routine clinical care for children and adolescents. Researchers will evaluate the incidence of certain types of medical conditions, such as neurological or autoimmune conditions, that have been identified as potential safety concerns for the vaccine. For children 2 to 10 years old, researchers will also catalog emergency room visits or inpatient care. The Food and Drug Administration approved the Menveo vaccine in January 2011 for children 2 to 10 years of age. The vaccine has been approved for use in adolescents and adults since February 2010.

Publications

Kaiser Permanente Southern California investigators continue to ask and answer questions that have the potential to transform clinical practices and improve health. Papers published in 2011 compared the safety and effectiveness of drug and treatment protocols, explored the incidence and outcomes of common chronic conditions, and evaluated strategies to influence health behaviors.

Researchers in Kaiser Permanente Southern California published nearly 300 articles in peer-reviewed journals in 2011. They served as lead authors on 150 of those articles. The following featured first-author studies illustrate the breadth of growing expertise within the Kaiser Permanente Southern California research communities. For a complete list of publications, see the Bibliography of 2011 Publications on page 39.

Long-Term Safety of Radiotherapy and Breast Cancer Laterality in Older Survivors

While radiotherapy after breast cancer surgery can prevent recurrence and extend survival, there are concerns about the long-term impact on cardiovascular health. In this study, researchers found that women treated with radiotherapy for left-side breast cancer had a slightly higher increased risk of cardiovascular disease compared with women with breast cancer on the right side. The findings point to a need to consider laterality of tumors in understanding the relationship between radiotherapy and cardiovascular disease.¹

1 Haque R, Yood MU, Geiger AM, Kamineni A, Avila CC, Shi J, Silliman RA, Quinn VP. Long-term safety of radiotherapy and breast cancer laterality in older survivors. *Cancer Epidemiol Biomarkers Prev.* 2011;20:2120-2126.

Daily or Intermittent Budesonide in Preschool Children with Recurrent Wheezing

Researchers found that preschool children with recurrent wheezing fared no better on a daily low dose regimen of budesonide than children who received intermittent high doses of the same drug for seven days with respiratory tract illnesses. This challenges existing recommendations for children under 5 years old who are at risk for persistent asthma.²

Teen Peer Educators and Diabetes Knowledge of Low-Income Fifth Grade Students

Researchers evaluated a unique peer education program for fifth grade children focused on type 2 diabetes prevention. The program involved nearly two dozen high school students of minority background as peer educators. The peer educators planned and organized a two-hour health fair for the fifth graders. After the fair, researchers found a significant increase in how much the fifth graders knew about diabetes and its warning signs.³



Research in the News

Research and innovation in Kaiser Permanente Southern California generated more than 2,000 positive news stories in 2011, according to a media analysis by Kaiser Permanente's outside public relations firm, Golin Harris. The following studies contributed to that positive media coverage.

Shingles Vaccine Associated with 55 Percent Reduced Risk of Disease

Receiving the herpes zoster vaccine was associated with a 55 percent reduced risk of developing shingles, according to a study published in the *Journal of the American Medical Association*.⁴

Non-Steroidal Anti-Inflammatory Drugs Linked to Increased Risk of Erectile Dysfunction

Men who take non-steroidal anti-inflammatory drugs three times a day for more than three months are 2.4 times more likely to have erectile dysfunction compared to men who do not take those drugs regularly, according to a study published in *The Journal of Urology*.⁵

² Zeiger RS, Mauger D, Bacharier LB, Guilbert TW, Martinez FD, Lemanske RF, Jr., Strunk RC, Covar R, Szeffler SJ, Boehmer S, Jackson DJ, Sorkness CA, Gern JE, Kelly HW, Friedman NJ, Mellon MH, Schatz M, Morgan WJ, Chinchilli VM, Raissy HH, Bade E, Malka-Rais J, Beigelman A, Taussig LM. Daily or intermittent budesonide in preschool children with recurrent wheezing. *N Engl J Med*. 2011;365:1990-2001. PMID: 3247621.

³ Coleman KJ, Clark AY, Shordon M, Ocana LL, Walker C, Araujo RA, Oratowski-Coleman J, Philis-Tsimikas A. Teen peer educators and diabetes knowledge of low-income fifth grade students. *J Community Health*. 2011;36:23-26.

⁴ Tseng HF, Smith N, Harpaz R, Bialek SR, Sy LS, Jacobsen SJ. Herpes zoster vaccine in older adults and the risk of subsequent herpes zoster disease. *JAMA*. 2011;305:160-166.

⁵ Gleason JM, Slezak JM, Jung H, Reynolds K, Van den Eeden SK, Haque R, Quinn VP, Loo RK, Jacobsen SJ. Regular nonsteroidal anti-inflammatory drug use and erectile dysfunction. *J Urol*. 2011;185:1388-1393.



Invasive Tests for Urinary Tract Cancer may have Minimal Diagnostic Value

Hematuria, or blood in the urine, may trigger a battery of tests for urinary tract cancer that are invasive and can unnecessarily expose patients to radiation, yet the procedures contribute little to the diagnosis, according to a study published in *The Journal of Urology*.⁶

Administering Pneumococcal and Shingles Vaccines Together is Beneficial

Administering both the pneumococcal and the herpes zoster vaccines to patients during the same visit is beneficial and does not appear to compromise the protective effect of the zoster vaccine, according to a study published in the journal *Vaccine*.⁷

Extremely Obese Children Have Higher Prevalence of Psoriasis, Higher Heart Disease Risk

Children who are overweight or obese have a significantly higher prevalence of psoriasis, and teens with psoriasis, regardless of their body weight, have higher cholesterol levels, according to a Kaiser Permanente study published in the *Journal of Pediatrics*.⁸

Youth with Diabetes More Likely to Have Asthma

Children and young adults with diabetes are more likely to have asthma, which may affect their ability to manage their diabetes. It may be more challenging for youth with asthma to maintain good glycemic control especially if their asthma is left untreated, according to a study from the SEARCH Study Group, published in *Pediatrics*.⁹

Common Medications Can Contribute to Lower Urinary Tract Symptoms in Men

Use of selected prescription medications, including antidepressants, antihistamines, bronchodilators, anticholinergics, sympathomimetics, and diuretics contribute to 10 percent of lower urinary tract symptoms among men, according to a study published in the *Archives of Internal Medicine*.¹⁰

⁶ Jung H, Gleason JM, Loo RK, Patel HS, Slezak JM, Jacobsen SJ. Association of hematuria on microscopic urinalysis and risk of urinary tract cancer. *J Urol*. 2011;185:1698-1703

⁷ Tseng HF, Smith N, Sy LS, Jacobsen SJ. Evaluation of the incidence of herpes zoster after concomitant administration of zoster vaccine and polysaccharide pneumococcal vaccine. *Vaccine*. 2011;29:3628-3632.

⁸ Koebnick C, Black MH, Smith N, Der-Sarkissian JK, Porter AH, Jacobsen SJ, Wu JJ. The association of psoriasis and elevated blood lipids in overweight and obese children. *J Pediatr*. 2011;159:577-583. PMID: 3168116.

⁹ Black MH, Anderson A, Bell RA, Dabelea D, Pihoker C, Saydah S, Seid M, Standiford DA, Waitzfelder B, Marcovina SM, Lawrence JM. Prevalence of asthma and its association with glycemic control among youth with diabetes. *Pediatrics*. 2011;128:e839-847.

¹⁰ Wuerstle MC, Van Den Eeden SK, Poon KT, Quinn VP, Hollingsworth JM, Loo RK, Jacobsen SJ. Contribution of common medications to lower urinary tract symptoms in men. *Arch Intern Med*. 2011;171:1680-1682. PMID: 3351272.

African American Women with Gestational Diabetes Face High Long-term Diabetes Risk

African American women who develop gestational diabetes mellitus face a 52 percent increased risk of developing diabetes in the future compared with white women who develop the condition during pregnancy, according to a study published in the journal *Diabetologia*.¹¹

Erectile Dysfunction Increases with Use of Multiple Medications According to Kaiser Permanente Study

The use of multiple medications is associated with increased severity of erectile dysfunction, according to a Kaiser Permanente study published online in the *British Journal of Urology International*.¹²

¹¹ Xiang AH, Li BH, Black MH, Sacks DA, Buchanan TA, Jacobsen SJ, Lawrence JM. Racial and ethnic disparities in diabetes risk after gestational diabetes mellitus. *Diabetologia*. 2011;54:3016-3021.

¹² Londono DC, Slezak JM, Quinn VP, Van Den Eeden SK, Loo RK, Jacobsen SJ. Population-based study of erectile dysfunction and polypharmacy. *BJU Int*. 2011. (ePub)



Faculty Research Programs

Research Scientists



Annette Adams, PhD, MPH | Research Scientist I

Dr. Annette Adams' primary research interests relate to orthopedic injuries, particularly of the hip and lower extremities. She has focused mainly on injuries in older adults, and has a particular interest in examining hospital-level influences and the effects of processes-of-care on outcomes in these patients. Additionally, Dr. Adams has begun examining how pre-existing and co-morbid conditions affect outcomes in patients undergoing hip or knee arthroplasty. Dr. Adams also has an interest in studying injuries in children.



John L. Adams, PhD | Research Scientist Biostatistician III

Dr. John Adams' interests include statistical methods for profiling managed care organizations, provider groups, and individual providers. His current work focuses on improving quantitative methods in quality assessment, and improving study design. He has participated in a wide range of research projects including measuring the quality of care for adults and children in the United States, designing a national quality monitoring system for Medicare beneficiaries, and evaluating chronic care improvement interventions in the U.K. and Europe. Dr. Adams is a Fellow of the American Statistical Association. Some of Dr. Adams most recent research includes a federally funded project that evaluated the reliability of provider cost and quality profiles in Massachusetts.



Mary Helen Black, PhD, MS | Research Scientist Biostatistician I

Adjunct Faculty, Biological Sciences, California State University Los Angeles, Los Angeles, California

A biostatistician and genetic epidemiologist, Dr. Mary Helen Black focuses on the application and development of statistical methods in order to better understand the genetic architecture of gestational and type 2 diabetes, obesity, and cardiovascular disease. She also studies environmental influences and their complex interaction with genetic background. Other research interests include medication adherence, comparative effectiveness, and pharmacogenetics studies aimed at improving outcomes in the treatment of diabetes and cardiovascular disease.



Chun Chao, PhD, MS | Research Scientist I

Adjunct Assistant Professor, Epidemiology, University of California, Los Angeles, Los Angeles, California

Dr. Chun Chao's research interests include identification of risk and protective factors for cancer; identification of prognostic markers for cancer disease progression; identification of predictors for adverse events associated with cancer treatment; and utilization of the human papillomavirus vaccine. She leads several cancer epidemiology projects with an emphasis on non-Hodgkin lymphoma, HIV-related malignancies, and prostate cancer. She is particularly interested in survivorship and tissue-based research. Her current studies examine the protective factors for primary and secondary cancer prevention, including the role of pharmacological agents and immunomodulation in lymphoma and prostate cancer; identification of prognostic tumor marker for HIV-related diffuse large B-cell lymphoma; and identification of risk factors for chemotherapy associated neutropenia.

Craig Cheetham, PharmD, MS | Pharmacist

Dr. Craig Cheetham's research interests include drug and vaccine safety, medication adherence, health services research, and pharmaceutical outcomes. He has studied the safety of vaccines and medications taken by pregnant women. Dr. Cheetham has done research on the cardiovascular risks of medication including attention deficit hyperactivity disorder drugs and hormonal contraceptives. He is especially interested in research that can be translated into medical practice. Dr. Cheetham practiced hospital-based clinical pharmacy for nearly 20 years before moving into his current position as a researcher within the Pharmacy Analytical Services Department at Kaiser Permanente Southern California.

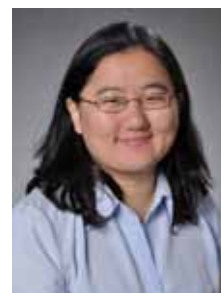
**Karen J. Coleman, PhD, MS | Research Scientist II**

Adjunct Associate Professor, Graduate School of Public Health, San Diego State University, San Diego, California; Adjunct Associate Professor, Department of Preventive Medicine, University of Southern California, Los Angeles, California

Dr. Karen Coleman's research interests include the behavioral, social, and environmental determinants of child, adolescent, and adult obesity. She is trained as a behavioral interventionist and has conducted several school health studies of interventions to reduce child obesity in low-income, primarily minority school districts. Dr. Coleman currently is creating a registry of Kaiser Permanente Southern California patients who have had weight loss surgery. The registry will be used for research and patient care management. She also is the lead investigator for Kaiser Permanente Southern California in the Mental Health Research Network funded by the National Institute of Mental Health. Her specific interests in this area are cross-cultural mental health promotion and measurement as well as the role of mental illness and health in the etiology of child, adolescent, and adult obesity.

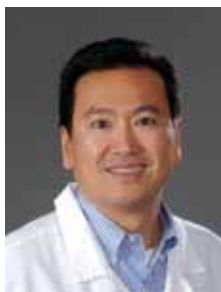
**Kim N. Danforth, ScD, MPH | Research Scientist I**

Dr. Kim Danforth has broad interests in health research and has studied a wide range of risk factors urinary incontinence and ovarian, prostate, endometrial, and colorectal cancers. These include self-reported lifestyle factors, circulating markers, and genetic data, and outcomes. She has conducted prospective, nested case-control, and cross-sectional analyses of several large cohort studies. Dr. Danforth's focus on answering research questions that can be directly translated into practice is what brought her to Kaiser Permanente, where she has been participating in the development of the Kaiser Permanente Center for Effectiveness and Safety Research.

**Stephen F. Deroose, MD, MSHS | Research Scientist I**

Dr. Stephen Deroose's research focuses on primary and secondary prevention of chronic disease at the individual and population levels. He uses a variety of research methods to address questions regarding clinical care delivery and outcomes. His areas of interest include chronic kidney disease, sleep disorders, cardiovascular disease, diabetes, and emergency department outcomes.





Donald S. Fong, MD, MPH | Director of Clinical Trials Research

Dr. Donald Fong's research interests are in the field of retinal diseases. He has conducted observational studies and clinical trials in diabetic retinopathy and macular degeneration. Additionally, Dr. Fong is interested in the ocular safety of systemic medications. Dr. Fong is a practicing ophthalmologist at the Kaiser Permanente Baldwin Park Medical Center.



Darios Getahun, MD, PhD, MPH | Research Scientist I

Clinical Assistant Professor, Obstetrics and Gynecology, Robert Wood Johnson Medical School, University of Medicine and Dentistry New Jersey, New Brunswick, New Jersey

Dr. Darios Getahun's current research focus and interests include population-based studies related to perinatal and child health issues, successive pregnancy outcomes, fetal origin of childhood diseases, asthma morbidity and mortality, and health disparities. Dr. Getahun studies the heritability of various adverse perinatal outcomes among singleton and multiple births to examine the contribution of genetic and shared intrauterine factors. He is also a member (co-investigator) of the research team that is exploring the impact of medication use in pregnancy on adverse perinatal outcomes in Kaiser Permanente members.



David Glass, PhD | Operational Research Scientist III

Dr. David Glass' research interests include the decision-making process of members, patients, and doctors on a variety of health care and delivery system issues. He uses qualitative and quantitative methods to understand how knowledge, beliefs, values, perceptions, emotions, and environment play a role in individual and group decisions. His research interests include: the relationship of health and productivity in the work setting; how segments, incentives, and social networks can reduce obesity of a defined population; how patients and doctors evaluate complex episodes of care; how primary care physicians make career choices; how patients choose among various sites for care; and how end-of-life preferences and experiences among patients and doctors can be systematically captured and acted upon.



Michael Gould, MD, MS | Assistant Director for Health Services and Implementation Research

Research Associate Professor of Medicine, Keck School of Medicine, University of Southern California, Los Angeles, California

Dr. Michael Gould uses the tools of meta-analysis, decision analysis, cost-effectiveness analysis, and large database analysis to examine multiple dimensions of health care quality (including safety, effectiveness, efficiency, equity and timeliness of care) for people with lung cancer, venous thromboembolism, and respiratory disease. His other interests include the development and implementation of clinical practice guidelines, and the use of computerized decision-support systems to improve the quality of care.

Reina Haque, PhD, MPH | Research Scientist II

Dr. Reina Haque is a cancer epidemiologist whose research interests include pharmacoepidemiology, cancer screening, and molecular markers of prognosis and cancer survivorship. She has led studies on breast, colorectal, and prostate cancer. Dr. Haque has conducted research using electronic health records to study cancer incidence, treatment, cancer recurrence, pathology, and pharmaceutical use. She is leading a multi-site study that examines common drug interactions in a large cohort of breast cancer survivors. Dr. Haque also serves as the scientific advisor to the Kaiser Permanente Southern California tumor registry.

**Steven J. Jacobsen, MD, PhD | Director of Research**

Research Professor of Preventive Medicine, Keck School of Medicine, University of Southern California, Los Angeles, California

A chronic disease epidemiologist by training, Dr. Steven Jacobsen has recently been the principal investigator on two large, pivotal post-licensure vaccine safety studies and is the site principal investigator for the Kaiser Permanente Southern California Vaccine Safety DataLink. He served as the lead epidemiologist for a variety of population-based studies, including studies of prostate disease (benign and malignant), vaccine safety and immunogenetics, rheumatoid arthritis, and many chronic diseases. He has authored or co-authored more than 400 peer-reviewed manuscripts and has served on the editorial board of the American Journal of Epidemiology since 1997 and for Vaccine since 2011. From 1997 to 2001, he was a charter member of the Epidemiology and Disease Control Study Section 1 for the Center for Scientific Review, National Institutes of Health. He also has served on and chaired numerous special emphasis panels.

**Jason Jones, PhD | Research Scientist II**

Adjunct Assistant Professor, Biomedical Informatics, University of Utah, Salt Lake City, Utah

Dr. Jason Jones' research aim is to support improvement in patient care through clinical decision support. His research focuses on patient identification, risk prediction, and treatment strategy selection around emergency department and inpatient encounters. Examples include rapid identification of patients with sepsis in the emergency room; prediction of venous thrombosis in hospitalized patients; and hospital admission decision support for patients with community acquired pneumonia. To maximize the clinical utility of existing electronic health and administrative data, Dr. Jones has spent time developing methodologies for storing, retrieving, analyzing, and presenting medical data from the individual patient encounter to the population level.

**Aniket A. Kawatkar, PhD, MS | Research Scientist I**

Dr. Aniket Kawatkar's broad research interests are in health inequity and disparities; health care and pharmaceutical utilization; and associated economic, clinical, and humanistic outcomes. Dr. Kawatkar uses established methods from econometrics, cost-effectiveness, conjoint analysis and net-benefit analysis to evaluate interventions and treatments aimed at improving patient care in real-world clinical settings. His research focus at Kaiser Permanente Southern California is on advancing methods and understanding of comparative effectiveness, medication compliance and persistence, cost and expenditure data modeling, health-related quality of life, and health utility elicitation in chronic diseases.





Corinna Koebnick, PhD, MSc | Research Scientist II

Dr. Corinna Koebnick is an obesity epidemiologist. Her primary research focus is to investigate health consequences of obesity in children and young adults, and to improve health services for young people with obesity-related conditions. Health consequences include conditions that are associated with chronic inflammation, increased cardiovascular disease risk, metabolic syndrome, and some cancers. Dr. Koebnick also leads the Kaiser Permanente Southern California Research Program on Genes, Environment, and Health, a large biobank resource that will link comprehensive electronic medical records, relevant behavioral and environmental factors, and genetic information from consenting health plan members. The program is designed to identify genes and other factors involved in the pathogenesis of health conditions as well as in the determination of treatment modalities that will affect a successful outcome.



Annette M. Langer-Gould, MD, PhD, MS | Research Scientist I

Associate Clinical Professor, Keck School of Medicine, University of Southern California, Los Angeles, California

Dr. Annette Langer-Gould's research interests include multiple sclerosis, neuroepidemiology, prognosis of chronic diseases, novel randomized controlled clinical trial designs, and the role of biomarkers and surrogate outcomes in clinical research. She has conducted studies on pregnancy and the modulation of multiple sclerosis, and is currently conducting a study on the role of vitamin D and genotype on the risk of developing multiple sclerosis. Dr. Langer-Gould is a practicing neurologist at the Kaiser Permanente Los Angeles Medical Center.



Jean M. Lawrence, ScD, MPH, MSSA | Research Scientist III

Research Associate Professor, Keck School of Medicine, University of Southern California, Preventive Medicine, Los Angeles, California

Dr. Jean Lawrence's research focuses on type 1 and type 2 diabetes in children, adolescents, and young adults, as well as pregestational diabetes and gestational diabetes mellitus. Dr. Lawrence is the principal investigator for the California Center of the SEARCH for Diabetes in Youth Study where she focuses on the incidence and outcomes of type 1 and type 2 diabetes in children, risk factors for short- and long-term complications, and the impact of diabetes on quality of life, including depression. Among childbearing women, her work examines trends and risk factors for gestational diabetes mellitus, postpartum glucose screening and follow-up, antidiabetic medication use prior to and during pregnancy, and progression to type 2 diabetes. An emphasis on identifying health disparities underpins much of this work.



Marlene M. Lugg, DrPh, MPH | Research Scientist I

Adjunct Professor, West Coast University, Health Care Administration, Los Angeles, California

Dr. Marlene Lugg's research interests are primarily in three areas: studies of immunization practices, quality, and vaccine safety; development of health information systems, including data linkage and immunization tracking systems (registries); and the causes and control of accidental injury.

Elizabeth A. McGlynn, PhD | Director, Kaiser Permanente Center for Effectiveness & Safety Research

Dr. Elizabeth McGlynn is responsible for oversight of the Kaiser Permanente Center for Effectiveness and Safety Research, a network of investigators, data managers, and analysts experienced in effectiveness and safety research in Kaiser Permanente's regional research centers. The Center draws on more than 200 Kaiser Permanente researchers and clinicians, along with Kaiser Permanente's 9 million members and their electronic health records, to conduct patient-centered effectiveness and safety research on a national scale.



Virginia P. Quinn, PhD, MPH | Research Scientist II

Dr. Virginia Quinn is a behavioral health and health services researcher. Her research focus includes the development and testing of interventions for changing diet, physical activity, smoking, and adherence to medications and medical treatment in diverse patient populations and families. Her research interests in the area of quality of care include breast cancer treatment and screening, tobacco policy, and treatment for psychosocial distress.



Kristi Reynolds, PhD, MPH | Research Scientist I

Dr. Kristi Reynolds is an epidemiologist with research interests in the etiology, prevention, and treatment of cardiovascular disease. Her work includes studies of risk factors for heart disease, stroke, diabetes, and end-stage renal disease; trends in diabetes, obesity, and cardiovascular disease rates; prevention of hypertension and stroke; and quality of care among overweight and obese patients. Dr. Reynolds serves on the Kaiser Permanente Southern California Medication Adherence Steering Committee and is involved in interventions to improve medication adherence. She is a former scholar of the Building Interdisciplinary Research Careers in Women's Health program, which is funded by the National Institutes of Health. Dr. Reynolds serves on the Diabetes Care and Hypertension editorial boards and is the site principal investigator for several collaborations funded by the National Institutes of Health and the Agency for Healthcare Research and Quality.



Hung Fu Tseng, PhD, MPH | Research Scientist III

Dr. Hung Fu Tseng's research focuses on infectious diseases, and vaccine safety and effectiveness. Areas of interest include zoster, varicella, rubella, hepatitis B, Japanese encephalitis, pneumococcal conjugate in children, and pneumococcal polysaccharide in adults. Dr. Tseng has led several multicenter studies and has expertise in analytical methods for a variety of study designs used in vaccine safety and effectiveness. He is the principal investigator for a five-year study of the zoster vaccine and herpes zoster funded by a National Institutes of Health Research Project Grant (R01). He also leads three Vaccine Safety DataLink studies funded by the Centers for Disease Control and Prevention: the zoster vaccine safety study, the PCV 13 Rapid Cycle Analysis study for children, and the safety study for off-label use of Tdap in elders. Dr. Tseng also is the principal investigator for a post-licensure safety study of the meningococcal vaccine supported by Novartis.





Anny Hui Xiang, PhD, MS | Research Scientist Biostatistician III

Adjunct Research Associate Professor, Department of Preventive Medicine, Keck School of Medicine, University of Southern California, Los Angeles, California

As an investigator and applied biostatistician, Dr. Anny Xiang uses statistical methodologies to understand disease development and to conduct clinical trials in disease prevention and intervention. Her focus has been on diabetes, cardiovascular disease, and obesity control. She has extensive experience in the design, conduct, and execution of data analyses for observational epidemiological studies and clinical trials. Dr. Xiang is interested in understanding genetic and environmental factors in diabetes risk. She also studies the racial and ethnic differences in risks of various diseases associated with gestational diabetes. Additional research interests include methodological investigation of biostatistical questions arising from research studies, collaborative investigations of etiology, biology and risk factors for disease development and drug safety; and appropriate design of clinical trials to assess treatment and intervention efficacy and effectiveness.



Deborah Rohm Young, PhD, MBA | Research Scientist III

Visiting Professor, Epidemiology and Biostatistics, University of Maryland, College Park, Maryland

Dr. Deborah Rohm Young's research includes the conduct of community-based physical activity intervention trials. She is specifically interested in interventions targeting minority women and adolescent girls, segments of the population that suffer the most profound health consequences of a sedentary lifestyle. Additionally, Dr. Young is establishing a research agenda to investigate methods to prevent childhood obesity, particularly in African-American youth. She works to ascertain how targeted food marketing to African-American communities may contribute to obesity prevalence, and how partnerships can be formed with communities and strategies developed to halt this practice.

Post-Doctoral Research Fellows



Rulin C. Hechter, MD, PhD

Dr. Rulin Hechter's research focuses mainly on infectious diseases, and vaccine safety and effectiveness studies. She is interested in factors associated with vaccine uptake, HIV infection-associated cardiovascular disease and aging, interventions to address disparity in HIV treatment retention and adherence, and interventions to improve hepatitis B screening rates among Asian adults. She is experienced with multicenter studies, including the National Institutes of Health-funded Multicenter AIDS Cohort Study, and the CDC-funded Vaccine Safety DataLink studies. She serves as a co-investigator of the Vaccine Safety DataLink studies at Kaiser Permanente Southern California. She also is working on a large, post-licensure vaccine safety study.



Kimberly Porter, PhD, MPH

Dr. Kimberly Porter's interests include various aspects of cancer research, such as epidemiology and prevention, outcomes and survivorship, epidemiologic methods, and health disparities. Her current projects examine racial and ethnic differences in the interval from diagnosis to treatment after a diagnosis of prostate cancer, and the occurrence of clinical diagnosis prior to biopsy. Dr. Porter serves as co-investigator on a prostate cancer quality-of-life study. She also is interested in the treatment decision-making process for prostate cancer among different racial and ethnic groups.

Lauren P. Wallner, PhD, MPH

Dr. Lauren Wallner's research interests include understanding the determinants, outcomes, and utilization of health services associated with cancer and other chronic diseases. Specifically, her research focuses on benign and malignant urologic conditions such as prostate cancer, urinary incontinence and benign prostatic hyperplasia. Her recent projects include understanding the role obesity and diabetes play in influencing the development and detection of prostate cancer, identifying outcomes associated with the treatment and management of urologic conditions, understanding the health care utilization of prostate cancer survivors and determining factors associated with prostate cancer mortality. She also is interested in identifying new ways to apply epidemiologic and cross-disciplinary methods to further the understanding of these chronic conditions.



Adjunct Investigators

Somjat S. Brar, MD, MPH | Adjunct Investigator

Dr. Somjat Brar's research interests include the role of medical devices and medications in the management of patients with cardiovascular diseases; comparative-effectiveness of medical devices, strategies, and medications for the management of coronary artery disease and related outcomes; predictors, outcomes, and therapies for contrast medium-induced nephropathy; rare cardiomyopathies; and meta-analysis and decision-making processes in cardiovascular medicine.

Sirichai Chayasirisobhon, MD | Adjunct Investigator

Dr. Sirichai Chayasirisobhon's research interests include the mechanism of refractory epilepsy, the use of vagus nerve stimulation for epilepsy, and clinical trials of new antiepileptic drugs.

R. James Dudl, MD | Adjunct Investigator

Dr. James Dudl's research interests include population-level cardiovascular disease prevention. He also studies glucose control in patients with diabetes.

Vincent J. Felitti, MD | Adjunct Investigator

For the past 17 years, Dr. Vincent Felitti has been co-principal investigator for the Adverse Childhood Experiences Study, a cohort study of the prevalence and long-term impact of adverse childhood experiences in 17,400 adult Kaiser Permanente members. The study has more than 60 publications to date.

Ann K. Kershner | Adjunct Investigator

Taking care of diabetic children and adolescents has been a large part of Dr. Ann Kershner's medical practice and research interests since 1970. She is a site principal investigator for the Hypoglycemia and Adverse Pregnancy Outcome (HAPO) Follow-Up study, an international, multicenter study funded by the National Institutes of Health-National Institute of Diabetes and Digestive and Kidney Disorders. Investigators will assess 800 mother-child pairs for measurable effects of hyperglycemic pregnancies 8 to 12 years after birth.

George F. Longstreth, MD | Adjunct Investigator

Dr. George Longstreth's research interests include gastrointestinal epidemiology, functional gastrointestinal disorders, acute large bowel ischemia, diverticulitis, celiac disease, and medical anthropology.

S. Michael Marcy, MD | Adjunct Investigator

Dr. Michael Marcy's research interests include vaccine efficacy and safety, management of infectious diseases in office practice, and appropriate and judicious use of antimicrobials.

Richard M. Roth, MD | Adjunct Investigator

Dr. Richard Roth's research focuses on asthma. Specific areas of interest include childhood asthma and prevention. His work also explores the comparative effectiveness of clinical tests to monitor asthma and predict outcomes.

David A. Sacks, MD | Adjunct Investigator

Dr. David Sacks' current research interests include consequences of maternal obesity, the establishment of norms for defining gestational diabetes, and the maternal and fetal consequences of early delivery of women who have diabetes.

Michael Schatz, MD, MS | Adjunct Investigator

Dr. Michael Schatz's current research interests include patient-centered asthma outcomes, risk stratification for asthma population management, asthma quality-of-care measures, and the interrelationships of asthma and pregnancy.

Mitsuo Tomita, MD | Adjunct Investigator

Dr. Mitsuo Tomita's research assesses the value of various approaches to improving care, including interactive patient groups and other modalities. Specific research interests include the contributions of continuing medical education, the clinical effectiveness of complementary medicine, and the value of understudied primary care practices.

Robert S. Zeiger, MD, PhD | Adjunct Investigator

Dr. Robert Zeiger's research interests include prevention of asthma and allergic disorders, clinical asthma trials of comparative treatments, cost analysis of asthma and allergic disorders, and outcomes research.

A small group of retired partner physicians from the Southern California Permanente Medical Group continue to participate in research as adjunct faculty members with the Department of Research & Evaluation. They contribute their expertise as clinician researchers to add to knowledge in a wide range of research areas, from the safety and effectiveness of vaccines to the prevention and treatment of chronic conditions.

Clinical Trials Research Program

The Clinical Trials Research Program provides Kaiser Permanente Southern California members access to new treatments, from investigational HIV drugs to novel cancer therapies. In 2011, the program had nearly 340 active clinical trials.

Clinical trials offer physician investigators the opportunity to learn about new drugs, devices, and treatment protocols during the development phase. More than 65 physicians serve as principal investigators for clinical trials in Kaiser Permanente Southern California. Six new investigators initiated trials in 2011.

A team of nearly 80 professionals provides operational support for clinical trials at more than 20 Kaiser Permanente Southern California locations. The following specialties offered access to clinical trials in 2011:

- Allergy.
- Blood and marrow transplant.
- Cardiology.
- Cardiovascular surgery.
- Dermatology.
- Diagnostic imaging.
- Endocrinology.
- Emergency medicine.
- Family medicine.
- Genetics.
- Gynecologic oncology.
- Hematology/oncology.
- Hepatology.
- Infectious diseases.
- Internal medicine.
- Nephrology.
- Neurology.
- Obstetrics-gynecology.
- Ophthalmology.
- Orthopedics.
- Pediatrics.
- Pediatric endocrinology.
- Pediatric oncology.
- Plastic surgery.
- Pulmonary.
- Radiation oncology.
- Surgery.
- Surgical oncology.
- Urology.
- Uro-gynecology.
- Vascular surgery.



Selected 2011 Accomplishments

The Clinical Trials Research Program continues to successfully enroll Kaiser Permanente members in important clinical trials. The Fontana Medical Center, for example, enrolled 240 Kaiser Permanente members in a multicenter study that evaluated cardiac computed-tomography angiography screening for chest pain (the ROMICAT II study). The site was the study's top enroller.

Dedicated clinical trial programs for cancer, HIV/AIDS, and hepatitis C enrolled hundreds of Kaiser Permanente members in trials in 2011. The programs provided individuals with these conditions access to new treatments and therapies. These programs also offset significant potential drug costs for the organization.

Cancer Clinical Trials Access Program

Principal Investigators: Jonathan Polikoff, MD, and Han Koh, MD

The Cancer Clinical Trials Access Program oversees trials for the prevention and treatment of cancer. Nearly 130 Kaiser Permanente members enrolled in studies through the program, which offered access to more than 50 trials in 2011.

In 2011, Kaiser Permanente Southern California was the top-accruing affiliate for SWOG (formerly the South West Oncology Group), one of the largest National Cancer Institute-supported clinical trials cooperatives.

Pediatric Clinical Trials

Principal Investigator: Robert Cooper, MD

The Pediatric Clinical Trials program provides children and adolescents with cancer access to promising new treatments. Investigators screened more than 100 children for oncology trials in 2011, enrolling more than 30 in treatment studies and nearly 40 in biology studies. The program, which also oversees trials for treatment of other pediatric conditions, managed more than 100 open trials in 2011.



Surgical Radiation Oncology Clinical Trials Access Program

Principal Investigator: Steve Vasilev, MD

The Surgical Radiation Oncology Clinical Trials Access Program manages clinical trial protocols for Kaiser Permanente members with cancer whose treatments involve surgery or radiation therapy in addition to chemotherapy. Fifty study participants enrolled in 2011. More than 150 Kaiser Permanente members were on active treatment or in follow-up during 2011.

Kaiser Permanente/City of Hope Blood & Marrow Transplant Research

Principal Investigators: Neil Kogut, MD, and Ricardo Spielberger, MD

Southern California Permanente Medical Group physicians provide care at City of Hope for Kaiser Permanente members who need bone marrow and stem cell transplants. In 2011, Permanente physicians performed 160 transplants at City of Hope. All 160 transplant patients enrolled in at least one research study; some enrolled in three studies. More than 1,000 Kaiser Permanente Southern California members are in long-term, post-transplant followup through this program.

Infectious Disease Research Program (formerly HIV/AIDS Research Trials)

Principal Investigators: William Towner, MD, FACP, and Alan Sheinbaum, MD

The Infectious Disease Research Program, previously known as the HIV/AIDS Research Trials Program, expanded its scope in 2011 to include chronic hepatitis C virus infection. The program managed more than 20 active clinical trials in 2011, and provided treatment follow up to nearly 200 Kaiser Permanente members. These members received access to more than a dozen investigational new drug treatments from these clinical trials.

Hepatology Research Program

Principal Investigator: Lisa Nyberg, MD

The San Diego-based Hepatology Research program has participated exclusively in hepatitis C clinical trials for nearly 10 years. In 2011, the program operated more than 10 active clinical trials and treated approximately 40 Kaiser Permanente members.





Biostatistics, Programming, and Research Database Services

The Biostatistics, Programming, and Research Database Services team brings together the expertise of biostatisticians, programmers, developers, and database administrators, to support scientific projects throughout Kaiser Permanente Southern California. The team also includes a natural language processing specialist.

Biostatisticians collaborate with scientists and clinician researchers, providing consultation on study design, sample size, and appropriate analytical methods. They also conduct data analyses and interpret the results.

Programmers extract and manage data, provide quality control, and generate reports. Development teams build Oracle and SAS database warehouses, as well as application tools that facilitate data collection and analysis.

Selected 2011 Accomplishments

In 2011, the Biostatistics, Programming and Research Database Services team contributed to nearly 250 analytical research projects. In addition, the team also contributed to 100 consultation and feasibility studies.

Team members authored or co-authored 46 papers in peer-reviewed journals, a 35 percent increase from 2010. Biostatisticians and programmers also gave presentations at several professional conferences, including the Western Users of SAS Software 2011 Conference and the 2011 Joint Statistical Meeting.

The Biostatistics, Programming, and Research Database Services team established a summer internship program in 2011. The inaugural class included an undergraduate student, a master's student, and a doctoral student.

Leveraging Natural Language Processing

The team continued to build expertise in natural language processing—technology that helps computers understand human language. Natural language processing uses step-by-step procedures, or algorithms, to scan written notes in electronic health records, searching for key words and phrases. This can detect important information that has not been captured by diagnostic or procedural codes.

In 2011, researchers employed natural language processing to scan radiology transcripts for specific key words that might indicate the presence of lung nodules. Another project used natural language processing to find men with prostate cancer by scanning pathology reports. Researchers also applied natural language processing to cull information from reports on prenatal ultrasound screening and glaucoma exams.

Developing Databases and Applications

Database developers enhanced databases that house information about mortality, lab results, immunization, inpatient pharmacy, and chemotherapy. They improved access to birth and death records for Kaiser Permanente members by linking to outside data sources, such as contract hospitals, Social Security Administration files, and California state records.

Application developers created a dynamic information center that helps researchers, statisticians, and programmers find information about the Research Data Warehouse. The information center includes user-friendly descriptions of the department's databases that researchers can use in grant applications.

Launching the Analytical Research Center

The Biostatistics, Programming, and Research Database Services team collaborated with the Research Information Technology team to launch a new Analytical Research Center in 2011. The center provides a secure and reliable environment to perform data analysis and database services in support of research and patient care management activities. The two teams worked together to draft the initial plans and documentation for the Analytical Research Center, and have collaborated to manage and maintain the environment.

Supporting Registries for Patient Care Management and Clinical Quality/Assurance

The Biostatistics, Programming, and Research Database Services team maintained and improved registries that aid in research, patient care management, and clinical quality reporting. In 2011, the team launched a Web application for the prostate cancer registry and supported online reporting for the HIV registry. The team also enhanced the bariatric surgery registry and its corresponding Web application.

Establishing Guidelines and Standard Operating Procedures

The Biostatistics, Programming, and Research Database Services team developed new guidelines and standard operating procedures to facilitate efficient and compliant practices. Topics addressed by new guidelines include statistical consulting on physician projects, access to research databases and applications, Oracle database administration, database usage guidelines, analytical research guidelines, promotional criteria, and administrative procedures.





Research Support

More than 40 research associates and project managers from the Research Support team collaborate with scientists and other researchers to implement epidemiologic, behavioral intervention, and observational research studies. Through this work, Research Support helps advance significant medical and behavioral discoveries to improve health.

Team members manage and coordinate research projects, conduct data collection, and consult on research projects. They recruit and obtain consent from study subjects, validate and analyze data, facilitate focus groups, and communicate with multilingual and multicultural patient populations.

Selected 2011 Accomplishments

Research Support worked with more than 60 investigators in 2011, including physician researchers at each Kaiser Permanente Southern California medical center. Team members co-authored more than 20 manuscripts and abstracts, and presented posters at several national scientific meetings.

Each year, Research Support makes significant contributions to research projects. The examples below are just a sampling of these contributions for 2011.

Abstracting Records for H1N1 Vaccine Safety

Research Support staff performed detailed medical record abstractions of Guillain Barré syndrome cases as part of a Vaccine Safety Datalink study monitoring the 2009 H1N1 influenza (swine flu) vaccine. Guillain Barré syndrome, a rare neurological disorder, had been identified as a potential safety concern based on experiences during the 1976 swine flu outbreak. The study results were published in 2011.

Assisting with Menveo Post-Licensure Safety Study Negotiations

Research Support played a critical role in the award and implementation of the Menveo (meningococcal conjugate vaccine) post-licensure safety study. Staff provided valuable input in negotiations with the sponsor by highlighting the Department of Research & Evaluation's experience with other vaccine post-licensure studies. Team members also collaborated with pharmacy and clinic staff to make the vaccine available to our members.

Recruiting for Obesity Prevention Tailored for Health Study

Team members put in extraordinary efforts to meet the recruitment target for the Obesity Prevention Tailored for Health study, a behavior change program that aims to improve diet and physical activity in families with 10- to 12-year-old children. Team members worked evenings and weekends to contact more than 2,000 Kaiser Permanente Southern California families and recruit nearly 370 families by the end of 2011.

Developing Research Ideas for the California Men's Health Study

Research Support staff worked closely with Kaiser Permanente Southern California investigators to help develop manuscripts and research ideas for the California Men's Health Study, a multi-ethnic cohort of more than 84,000 men. In 2011, study investigators published three manuscripts from the California Men's Health Study. Three more were accepted for publication in 2011, including one with Research Associate Nirupa Ghai, PhD, MPH, as first author.



Building Research Infrastructure for the Cancer Research Network Study

To expand capacity to conduct cancer-related research, a research associate worked with research scientists and clinical leaders to conceptualize, develop, and validate a SAS-based natural language processing algorithm to analyze, code, and classify pathology reports for purposes of identifying new and recurrent cancers. This algorithm is also able to extract important clinical information, such as cancer staging.

Recruiting for the Cardiovascular Pharmacogenomic Prevention Program in Diabetes

Research Support team members successfully recruited, screened, and scheduled nearly 200 Kaiser Permanente Southern California members for in-person study visits within a four-week period for the Cardiovascular Pharmacogenomic Prevention Program in Diabetes pilot study. This achievement was used to highlight Kaiser Permanente Southern California capabilities in a response to reviewers for a resubmission of a National Institutes of Health grant proposal.

Providing Compassionate Support for Cervical Cancer Survivors

Research Support staff worked with cervical cancer survivors in a psychosocial study. Several study participants expressed gratitude for the compassionate encouragement they received throughout the study. One participant even credited the study staff with inspiring her to resume painting, a hobby she had been too depressed to enjoy before joining the study.

Facilitating Research on Antidepressants and Breast Cancer Pharmacology

Research Support made significant contributions to the Antidepressants and Breast Cancer Pharmacology study, which is funded by a National Institutes of Health Research Project Grant (R01). Staff assembled literature, assisted with chart review process, and organized study meetings. One of the research associates helped translate methodological concepts into steps that the biostatisticians could implement. Another added considerable expertise in reviewing and abstracting cancer pathology data.



Research Finance

Research Finance provides sponsored project administration and research financial administration services to the Kaiser Permanente Southern California research program. Team members support investigators throughout the research project timeline—from preparing grants and contracts to fiscal accounting and cost management—to make sure that research conducted at, or in collaboration with, Kaiser Permanente complies with policies and regulations.

Research Finance Administration Office

The Research Finance Administration Office oversees post-award fiscal compliance of all extramural sponsored projects in accordance with Office of Management and Budget (OMB) guidelines, Generally Accepted Accounting Principles, and institutional policies. Responsibilities include providing sponsors with invoices and expenditure reports, collecting payments and managing accounts receivables for extramural projects, and providing reports and analysis to scientists, managers, outside sponsors, and other stakeholders. The office also participates in the annual external audit in accordance with the federal OMB A-133 guidelines.

Sponsored Projects Administration Office

The Sponsored Projects Administration Office is responsible for all pre- and post-award management of extramural and intramural sponsored projects in accordance with federal regulations, institutional policies, and good business practices. This includes federal, non-profit, and industry grants and contracts, as well as industry clinical trials and internally funded grants. Responsibilities include assisting principal investigators with grant preparation and submissions, negotiating grant or contract terms, monitoring post-award activities, preparing subcontracts, responding to requests or audits from sponsors, and assuring compliance with sponsor and institutional requirements. The team also participates in the annual external audit in accordance with OMB A-133 guidelines.

Selected 2011 Accomplishments

The Sponsored Projects Administration Office worked with researchers to submit nearly 320 grants in 2011, up from more than 250 in 2010. More than 210 were awarded, compared with about 160 in 2010.

The Research Finance Administration Office oversaw an expanding budget for research expenditures. In 2011, research expenditures were \$36.5 million compared with \$28.8 million in 2010.

Collaborating to Improve Research Administration

Research & Evaluation's administrative leadership team, Research Finance, and other business units from the department hosted and facilitated the National Research Administration Leadership Committee's annual conference in November 2011. The conference's objective was to advance interregional cooperation, collaboration, and efficiency in research administration. Participants gained knowledge of regulatory issues, research initiatives, regional best practices, and variability between Regions.

Recruiting New Personnel and Advancing Professional Knowledge

Research Finance recruited and hired a Sponsored Projects Administration Office Operations Manager, Kelvin Kelley, in February 2011 to bolster the team's capacity to manage the growing volume of grants and contracts.

Research Finance continued to offer professional development and technical training to staff to enhance job proficiency and improve customer service. Staff also took part in advanced software skills training classes, as well as professional development courses in pre- and post- award administration.



Furthering Process Improvement

During 2011, Research Finance continued to implement process improvements to address increasing industry research volume and improve contract execution turnaround time. This resulted in quicker project start up, improved enrollment, and increased drug cost savings.

The team streamlined workflows through automation of the federal indirect cost proposals, quarterly operations reports, and audit flag reports. This is an interim step until a new information technology system is implemented to support research finance processes as well as pre- and post-award administration.





Administrative Support Unit

The Administrative Support Unit performs essential administrative tasks that keep research projects and operations running smoothly. The team's contributions include managing project and business unit budgets, organizing events, scheduling meetings, and maintaining essential records and documentation. The unit includes more than 20 research administrative analysts and administrative specialists.

Research administrative analysts act as business managers for the research scientists, freeing researchers' time to focus on science. They assist with grant submissions, manuscript preparation and submissions, and scientific posters and presentations.

Administrative specialists provide administrative assistance for managers and directors. They handle daily tasks and special projects for the business units, from timekeeping to emergency response training.

Selected 2011 Accomplishments

Providing Administrative Assistance for Physician Researchers

The department established a new Off-Site Administrative Support Services group in 2011 to assist physician researchers in the medical centers with project-related business. The goal of this team is to help physicians balance the demands of research and clinical practice.

Onboarding Scientists and Staff

The Administrative Support Unit handles onboarding for new scientists and staff, a significant assignment in a growing department. Tasks range from assigning desk space to providing a general department orientation to all new hires. In 2011, the team supported the arrival of two dozen new team members. The Administrative Support Unit also grew, adding four research administrative analysts in 2011.

Supporting Grant Applications and Publication Submissions

The Administrative Support Unit assists scientific work by keeping the grant application and publication submission processes on track. In 2011, research administrative analysts processed about 100 grant submissions, including primary and sub-contracted grants. Additionally, they assisted with about 100 manuscript submissions, more than 40 poster presentations, and approximately 20 slide presentations.

Building a Training Curriculum

The Administrative Support team invests considerable resources in peer-to-peer training so that each team member has the knowledge and skills to perform well in their positions. The Administrative Support Team created more than 20 training guides in 2011 for new and current administrative staff.

Managing Department Events and Committees

The Administrative Support Team assisted with planning and organizing nearly two dozen department events, including the monthly Administrative Grand Rounds and Department Seminars.

Research Information Technology

The Research Information Technology team provides the information technology infrastructure to support scientific research. The team is responsible for providing a stable and adaptive technology environment, identifying new technology to improve efficiency and streamline business processes, and responding to the day-to-day computing needs of the research team.

Nine team members with diverse technical expertise provide the following services: application development, network and server support, desktop and help desk support, Web design and development, database administration and support, and project management.



2011 Accomplishments

Upgrading Office Software

The Research IT group upgraded about 240 desktop and laptop computers to the Windows 7 operating system and Microsoft Office 2010 software suite. To ease the transition to the new operating system and office software, the group collaborated with Research Operations to provide training for nearly 200 Pasadena-based personnel.

Collaborating to Build the Analytical Research Center

Research IT collaborated with the Biostatistics, Programming, and Research Database Services team to establish the Analytical Research Center, a secure computing environment that supports complex data analysis. The two teams partnered to draft plans for the new environment and developed formal agreements to maintain the new center.

Developing Websites and Intranet Portals

Research IT created a new design for the department website, with more intuitive navigation, additional functionality, and a new look and feel. The team built two versions of the site—one behind the Kaiser Permanente firewall, and another on the Web. Both sites launched early in 2011.

The Research IT group also built two intranet portals for the department in 2011.

Creating the Research & Evaluation Database

Research IT created the Research & Evaluation Database to make it easier to maintain and access employee information. The team developed a secure administrative website that allows employees to update their personal information.

Launching a New Help Desk

Research IT launched a new online Help Desk, which efficiently routes requests for technical assistance. The team processed more than 700 requests through the Help Desk after it went live in June 2011.



Research Operations

The Research Operations team aims to cultivate efficient and effective business practices that support the continued growth and success of the research department. In addition to identifying opportunities for process improvement, the team coordinates projects with multiple work groups and builds partnerships with other Kaiser Permanente departments.

Research Operations focuses on issues with broad impact across the department's work groups. Examples include recruitment, career development, compliance, and building safety. The team also includes two communications professionals. They develop and implement strategies to raise awareness about the role of research within Kaiser Permanente and convey the importance of research findings to internal and external audiences.

Selected 2011 Accomplishments

Coordinating Training for Windows 7 and Office 2010

Research Operations collaborated with the Research IT group to organize software training for all Pasadena-based staff when the department upgraded to Windows 7 and Office 2010. To support the training program, Research Operations negotiated a loan of more than a dozen laptop computers from another Kaiser Permanente Southern California department. This saved tens of thousands of dollars. Trainees also benefited from a more realistic learning experience by using computers set up within the Kaiser Permanente environment.

Mapping Paths for Career Development

Research Operations coordinated the establishment of a career development ladder that outlines steps employees can take to advance their careers within the department. The Research Operations manager collaborated with other managers to compile core competencies and promotional criteria into career progression checklists for each business unit.

Supporting Department Events

Research Operations created publicity for department events, including the Clinical and Translational Science Partnership Conference and the Open House. The team partnered with the Director of Research Administration, Research Finance, and Research IT to organize plans and logistics for the National Research Administration Leadership Committee, an annual meeting that included administrative leaders from the Kaiser Permanente regional research centers and the Kaiser Foundation Research Institute.

Developing a Strategic Communication Plan

The team created a new communication plan, which outlined strategies and tactics to build a stronger brand for research and demonstrate that research is integral to the Kaiser Permanente mission. Coinciding with the development of the plan, the team rolled out new communication materials, and supported the launch of the revamped department website.

Educational Activities

As part of its commitment to the professional development of its staff, the Department of Research & Evaluation sponsors monthly Journal Club meetings, Administrative Grand Rounds, and Department Seminars. The opportunities are designed to expose and educate members of the department to current and relevant journal articles, accomplishments of scientific colleagues, and overall regulations related to research.

Journal Club

The purpose of the Journal Club is to provide a forum for the research scientists and staff to keep up with the latest literature, share knowledge, promote recent research findings, improve literature appraisal skills, discuss controversies, and inspire ideas for future research. Topics in 2011 included

- Overview of Propensity Score Analysis.
- Meal Replacement in Weight Loss.
- The HapMap as a Tool in Conducting Gene Association Studies.
- A Proposed Method to Adjust for Selection Bias in Cohort Studies.
- Integration of Qualitative Data in Mixed-Methods Research—a More Efficient, Targeted, and Focused Analysis.
- Correcting of Bias Due to Measurement Error in Assessing Baseline Prediction on Longitudinal Change.

Administrative Grand Rounds

Administrative Grand Rounds provide a forum for scientists and staff to learn about relevant administrative research topics. Department leaders and managers explain compliance requirements, clarify internal business processes, and communicate department priorities. The Department of Research & Evaluation also invites speakers from other departments to discuss Kaiser Permanente initiatives that may have implications for research. Topics in 2011 included

- Kaiser Permanente's Approach to Complete Care.
- Misconduct in Research.
- Safety and Emergency Training.
- Career Development Ladder.
- State of Research at Kaiser Permanente.
- Employee Fitness and Well-Being.
- Responsible Conduct in Research.
- SCPMG Travel Policy.





Department Seminars

Department Seminars allow Department of Research & Evaluation staff, and the entire Kaiser Permanente Southern California community, to learn about and discuss the latest in research. Topics in 2011 included

- Race and Ethnicity Collection in the Ambulatory Setting.
- Role of Los Angeles County Department of Public Health.
- Using Kaiser Permanente HealthConnect for Clinical Research.
- Clinical Hypertension and Department of Research Collaboration: Opportunities for Working Together.
- Change on the Horizon for ICD-10, the International Statistical Classification of Diseases and Related Health Problems.

Committees

Staff and scientists within the Department of Research & Evaluation help build the department through committee membership. Some committees, such as the Regional Research Committee, involve physicians and administrative leaders from the regional offices and medical centers.

The department has more than a dozen committees that serve a wide range of functions, from establishing a biospecimen repository to recruiting scientists. Through committee membership, scientists and staff have a voice in shaping the future of the department. The committees in 2011 were

- Appointments and Promotions.
- Biospecimen.
- Communication.
- Compliance.
- Data Quality.
- Education/Training.
- Executive.
- Regional Research.
- Scientist Recruiting.
- Staff Recognition.
- Staff Recruiting and Retention.
- Technology Advisory.
- Web.

Bibliography of 2011 Publications

In 2011, Kaiser Permanente Southern California researchers published nearly 300 articles in peer-reviewed journals. Of these, 150 were first-author papers. Below, Kaiser Permanente first authors are noted in bold.

Asthma

Chipps B, Zeiger RS, Murphy K, Mellon M, Schatz M, Kosinski M, Lampl K, Ramachandran S. Longitudinal validation of the Test for Respiratory and Asthma Control in Kids in pediatric practices. *Pediatrics*. 2011;127:e737-747.

Guilbert TW, Garris C, Jhingran P, Bonafede M, Tomaszewski KJ, Bonus T, Hahn RM, Schatz M. Asthma that is not well-controlled is associated with increased healthcare utilization and decreased quality of life. *J Asthma*. 2011;48:126-132.

Guilbert TW, Mauger DT, Allen DB, Zeiger RS, Lemanske RF, Jr., Szeffler SJ, Strunk RC, Bacharier LB, Covar R, Sorkness CA, Taussig LM, Martinez FD. Growth of preschool children at high risk for asthma 2 years after discontinuation of fluticasone. *J Allergy Clin Immunol*. 2011;128:956-963 e951-957. PMID: 3224818.

Horner CC, Mauger D, Strunk RC, Graber NJ, Lemanske RF, Jr., Sorkness CA, Szeffler SJ, Zeiger RS, Taussig LM, Bacharier LB. Most nocturnal asthma symptoms occur outside of exacerbations and associate with morbidity. *J Allergy Clin Immunol*. 2011;128:977-982 e971-972.

Kaplan MS, Jung SY, Chiang ML. Epinephrine autoinjector refill history in an HMO. *Curr Allergy Asthma Rep*. 2011;11:65-70.

Krishnan JA, Schatz M, Apter AJ. A call for action: Comparative effectiveness research in asthma. *J Allergy Clin Immunol*. 2011;127:123-127. PMID: 3017678.

Martinez FD, Chinchilli VM, Morgan WJ, Boehmer SJ, Lemanske RF, Jr., Mauger DT, Strunk RC, Szeffler SJ, Zeiger RS, Bacharier LB, Bade E, Covar RA, Friedman NJ, Guilbert TW, Heidarian-Raissy H, Kelly HW, Malka-Rais J, Mellon MH, Sorkness CA, Taussig L. Use of beclomethasone dipropionate as rescue treatment for children with mild persistent asthma (TREXA): a randomised, double-blind, placebo-controlled trial. *Lancet*. 2011;377:650-657.

Murphy V, Namazy J, Powell H, Schatz M, Chambers C, Attia J, Gibson P. A meta-analysis of adverse perinatal outcomes in women with asthma. *BJOG*. 2011;118:1314-23.

Namazy JA, Schatz M. Asthma and pregnancy. *J Allergy Clin Immunol*. 2011;128:1384-1385 e1382.

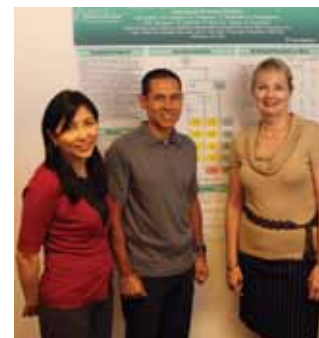
Namazy JA, Schatz M. Asthma and rhinitis during pregnancy. *Mt Sinai J Med*. 2011;78:661-670.

Schatz M, Zeiger RS. Improving asthma outcomes in large populations. *J Allergy Clin Immunol*. 2011;128:273-277.

Schatz M, Zeiger RS, Yang SJ, Chen W, Kosinski M. Further validation and definition of the psychometric properties of the Asthma Impact Survey. *J Allergy Clin Immunol*. 2011;128:44-49 e41.

Szeffler SJ, Zeiger RS, Haselkorn T, Mink DR, Kamath TV, Fish JE, Chipps BE. Economic burden of impairment in children with severe or difficult-to-treat asthma. *Ann Allergy Asthma Immunol*. 2011;107:110-119 e111.

Tamasi L, Horvath I, Bohacs A, Muller V, Losonczy G, Schatz M. Asthma in pregnancy—immunological changes and clinical management. *Respir Med*. 2011;105:159-164.



Wang L, Hollenbeak CS, Mauger DT, Zeiger RS, Paul IM, Sorkness CA, Lemanske RF, Jr., Martinez FD, Strunk RC, Szeffler SJ, Taussig LM. Cost-effectiveness analysis of fluticasone versus montelukast in children with mild-to-moderate persistent asthma in the Pediatric Asthma Controller Trial. *J Allergy Clin Immunol*. 2011;127:161-166, 166 e161. PMID: 3061816.

Wu AC, Tantisira K, Li L, Schuemann B, Weiss ST, Fuhlbrigge AL. Predictors of symptoms are different from predictors of severe exacerbations from asthma in children. *Chest*. 2011;140:100-107. PMID: 3130529.

Zeiger RS, Mauger D, Bacharier LB, Guilbert TW, Martinez FD, Lemanske RF, Jr., Strunk RC, Covar R, Szeffler SJ, Boehmer S, Jackson DJ, Sorkness CA, Gern JE, Kelly HW, Friedman NJ, Mellon MH, Schatz M, Morgan WJ, Chinchilli VM, Raissy HH, Bade E, Malka-Rais J, Beigelman A, Taussig LM. Daily or intermittent budesonide in preschool children with recurrent wheezing. *N Engl J Med*. 2011;365:1990-2001. PMID: 3247621.

Zeiger RS, Mellon M, Chipps B, Murphy KR, Schatz M, Kosinski M, Lampl K, Ramachandran S. Test for Respiratory and Asthma Control in Kids (TRACK): clinically meaningful changes in score. *J Allergy Clin Immunol*. 2011;128:983-988.

Zeiger RS, Schatz M, Zhang F, Crawford WW, Kaplan MS, Roth RM, Chen W. Elevated exhaled nitric oxide is a clinical indicator of future uncontrolled asthma in asthmatic patients on inhaled corticosteroids. *J Allergy Clin Immunol*. 2011;128:412-414.

Zeiger RS, Schatz M, Zhang F, Crawford WW, Kaplan MS, Roth RM, Chen W. Association of exhaled nitric oxide to asthma burden in asthmatics on inhaled corticosteroids. *J Asthma*. 2011;48:8-17.

Cancer

Abbas MA. Wide local excision for Buschke-Lowenstein tumor or circumferential carcinoma in situ. *Tech Coloproctol*. 2011;15:313-318.

Ahmad ZK, Brown CM, Cueva RA, Ryan AF, Doherty JK. ErbB expression, activation, and inhibition with lapatinib and tyrphostin (AG825) in human vestibular schwannomas. *Otol Neurotol*. 2011;32:841-847.

Belinson JL, Wu R, Belinson SE, Qu X, Yang B, Du H, Wang C, Zhang L, Zhou Y, Liu Y, Pretorius RG. A population-based clinical trial comparing endocervical high-risk HPV testing using hybrid capture 2 and Cervista from the SHENCCAST II Study. *Am J Clin Pathol*. 2011;135:790-795.

Cassarino DS. Atypical fibrous histiocytoma with aberrant cytokeratin-5/6 expression. *J Cutan Pathol*. 2011;38:179-182.

Chang CF, Rashtian A, Gould MK. The use and misuse of positron emission tomography in lung cancer evaluation. *Clin Chest Med*. 2011;32:749-762. PMID: 3210441.

Chao C, Li Q, Zhang F, White E. Alcohol consumption and risk of lung cancer in the VITamins And Lifestyle Study. *Nutr Cancer*. 2011;63:880-888.

Czuczman MS, Vose JM, Witzig TE, Zinzani PL, Buckstein R, Polikoff J, Li J, Pietronigro D, Ervin-Haynes A, Reeder CB. The differential effect of lenalidomide monotherapy in patients with relapsed or refractory transformed non-Hodgkin lymphoma of distinct histological origin. *Br J Haematol*. 2011;154:477-481.

Eradat J, Abtin F, Gutierrez A, Suh R. Evaluation of treatment response after nonoperative therapy for early-stage non-small cell lung carcinoma. *Cancer J*. 2011;17:38-48.

Field TS, Bosco JL, Prout MN, Gold HT, Cutrona S, Pawloski PA, Ulcickas Yood M, Quinn VP, Thwin SS, Silliman RA. Age, comorbidity, and breast cancer severity: impact on receipt of definitive local therapy and rate of recurrence among older women with early-stage breast cancer. *J Am Coll Surg*. 2011;213:757-765. PMID: 3223288.

Ganz PA, Land SR, Geyer CE, Jr., Cecchini RS, Costantino JP, Pajon ER, Fehrenbacher L, Atkins JN, Polikoff JA, Vogel VG, Erban JK, Livingston RB, Perez EA, Mamounas EP, Wolmark N, Swain SM. Menstrual history and quality-of-life outcomes in women with node-positive breast cancer treated with adjuvant therapy on the NSABP B-30 trial. *J Clin Oncol*. 2011;29:1110-1116. PMID: 3083866.

Garg G, Shah JP, Toy EP, Christensen C, Deppe G, Asaad R, Morris RT. Stage IIA1 versus stage IIA2 cervical cancer: does the new staging criteria predict survival? *Int J Gynecol Cancer*. 2011;21:711-716.

Garg G, Shah JP, Toy EP, Field JB, Bryant CS, Liu JR, Morris RT. Intra-operative detection of nodal metastasis in early stage cervical cancer: a survey of the practice patterns of SGO members. *Gynecol Oncol*. 2011;121:143-147.

Gould MK. Evaluation of screening-detected lung nodules: minimising the risk of unnecessary biopsy and surgery. *Thorax*. 2011;66:277-279.

Gould MK. Multidisciplinary approach to the evaluation of the lung cancer patient. Kernstine KH, Reckamp, KL, eds. *Lung Cancer: A Multidisciplinary Approach to Diagnosis and Management*. New York: *Demos Medical Publishing*. 2011;7.

Gould MK, Schultz EM, Wagner TH, Xu X, Ghaus SJ, Wallace RB, Provenzale D, Au DH. Disparities in lung cancer staging with positron emission tomography in the Cancer Care Outcomes Research and Surveillance (CanCORS) study. *J Thorac Oncol*. 2011;6:875-83.

Haque R, Yood MU, Geiger AM, Kamineni A, Avila CC, Shi J, Silliman RA, Quinn VP. Long-term safety of radiotherapy and breast cancer laterality in older survivors. *Cancer Epidemiol Biomarkers Prev*. 2011;20:2120-2126.

Hodis HN, Mack WJ, Kono N, Azen SP, Shoupe D, Hwang-Levine J, Petitti D, Whitfield-Maxwell L, Yan M, Franke AA, Selzer RH. Isoflavone soy protein supplementation and atherosclerosis progression in healthy postmenopausal women: a randomized controlled trial. *Stroke*. 2011;42:3168-3175. PMID: 3202054.

Karim R, Dell RM, Greene DF, Mack WJ, Gallagher JC, Hodis HN. Hip fracture in postmenopausal women after cessation of hormone therapy: results from a prospective study in a large health management organization. *Menopause*. 2011;18:1172-1177.

Jung H, Gleason JM, Loo RK, Patel HS, Slezak JM, Jacobsen SJ. Association of hematuria on microscopic urinalysis and risk of urinary tract cancer. *J Urol*. 2011;185:1698-1703.

Kamell JM, Rietkerk W, Lam K, Phillips JM, Wu JJ, McCullough JL, Linden KG, Osann K. Medical students educate teens about skin cancer: what have we learned? *J Cancer Educ*. 2011;26:153-155. PMID: 3041912.

Lai A, Tran A, Nghiemphu PL, Pope WB, Solis OE, Selch M, Filka E, Yong WH, Mischel PS, Liau LM, Phuphanich S, Black K, Peak S, Green RM, Spier CE, Kolevska T, Polikoff J, Fehrenbacher L, Elashoff R, Cloughesy T. Phase II study of bevacizumab plus temozolomide during and after radiation therapy for patients with newly diagnosed glioblastoma multiforme. *J Clin Oncol*. 2011;29:142-148. PMID: 3058273.

Ma Z, Swede H, Cassarino D, Fleming E, Fire A, Dadras SS. Up-regulated Dicer expression in patients with cutaneous melanoma. *PLoS One*. 2011;6(6).

- Mahdavi A, Tajalli TR, Dalmar A, Vasilev SA, Lentz SE, Berman ML. Role of adjuvant chemotherapy in patients with early stage uterine papillary serous cancer. *Int J Gynecol Cancer*. 2011;21:1436-1440.
- Nichol MB, Wu J, An JJ, Huang J, Denham D, Frencher S, Jacobsen SJ. Budget impact analysis of a new prostate cancer risk index for prostate cancer detection. *Prostate Cancer Prostatic Dis*. 2011;14:253-261.
- Schwartzentruber DJ, Lawson DH, Richards JM, Conry RM, Miller DM, Treisman J, Gailani F, Riley L, Conlon K, Pockaj B, Kendra KL, White RL, Gonzalez R, Kuzel TM, Curti B, Leming PD, Whitman ED, Balkissoon J, Reintgen DS, Kaufman H, Marincola FM, Merino MJ, Rosenberg SA, Choyke P, Vena D, Hwu P. gp100 peptide vaccine and interleukin-2 in patients with advanced melanoma. *N Engl J Med*. 2011;364:2119-2127.
- Shanesmith RP, Smart C, Cassarino DS. Tissue microarray analysis of ezrin, KBA.62, CD166, nestin, and p-Akt in melanoma versus banal and atypical nevi, and nonmelanocytic lesions. *Am J Dermatopathol*. 2011;33:663-668.
- Shie P.** Incidental focal hypermetabolic colorectal lesions identified by positron emission tomography: prevalence of malignancy. *Abdom Imaging*. 2011;36:165-169.
- Silverberg MJ, Chao C, Leyden WA, Xu L, Horberg MA, Klein D, Towner WJ, Dubrow R, Quesenberry CP, Jr., Neugebauer RS, Abrams DI. HIV infection, immunodeficiency, viral replication, and the risk of cancer. *Cancer Epidemiol Biomarkers Prev*. 2011;20:2551-2559. PMID: 3237725.
- Slatore CG, Gould MK, Au DH, Deffebach ME, White E. Lung cancer stage at diagnosis: Individual associations in the prospective VITamins and lifestyle (VITAL) cohort. *BMC Cancer*. 2011;11:228. PMID: 3129325.
- Spencer C, Petrovic I, Fatemi S. Current thyroglobulin autoantibody (TgAb) assays often fail to detect interfering TgAb that can result in the reporting of falsely low/undetectable serum Tg IMA values for patients with differentiated thyroid cancer. *J Clin Endocrinol Metab*. 2011;96:1283-1291.
- Travis WD, Brambilla E, Noguchi M, Nicholson AG, Geisinger K, Yatabe Y, Powell CA, Beer D, Riely G, Garg K, Austin JH, Rusch VW, Hirsch FR, Jett J, Yang PC, Gould M. International Association for the Study of Lung Cancer/American Thoracic Society/European Respiratory Society: international multidisciplinary classification of lung adenocarcinoma: executive summary. *Proc Am Thorac Soc*. 2011;8:381-385.
- Travis WD, Brambilla E, Noguchi M, Nicholson AG, Geisinger KR, Yatabe Y, Beer DG, Powell CA, Riely GJ, Van Schil PE, Garg K, Austin JH, Asamura H, Rusch VW, Hirsch FR, Scagliotti G, Mitsudomi T, Huber RM, Ishikawa Y, Jett J, Sanchez-Cespedes M, Sculier JP, Takahashi T, Tsuboi M, Vansteenkiste J, Wistuba I, Yang PC, Aberle D, Brambilla C, Flieder D, Franklin W, Gazdar A, Gould M, Hasleton P, Henderson D, Johnson B, Johnson D, Kerr K, Kuriyama K, Lee JS, Miller VA, Petersen I, Roggli V, Rosell R, Saijo N, Thunnissen E, Tsao M, Yankelewitz D. International association for the study of lung cancer/american thoracic society/european respiratory society international multidisciplinary classification of lung adenocarcinoma. *J Thorac Oncol*. 2011;6:244-285.
- Van Dyne EA.** Issues in chemotherapy. *Pediatr Rev*. 2011;32:86-87.
- Yang CH, Chuang LY, Chen YJ, Tseng HF, Chang HW. Computational analysis of simulated SNP interactions between 26 growth factor-related genes in a breast cancer association study. *OMICS*. 2011;15:399-407.
- Yang HP, Gierach GL, Danforth KN, Sherman ME, Park Y, Wentzensen N, Hollenbeck A, Schatzkin A, Brinton LA. Alcohol and endometrial cancer risk in the NIH-AARP diet and health study. *Int J Cancer*. 2011;128:2953-2961. PMID: 3020256.

Cardiovascular Disease

Baber U, Mehran R, Sharma SK, Brar S, Yu J, Suh JW, Kim HS, Park SJ, Kastrati A, de Waha A, Krishnan P, Moreno P, Sweeny J, Kim MC, Suleman J, Pyo R, Wiley J, Kovacic J, Kini AS, Dangas GD. Impact of the everolimus-eluting stent on stent thrombosis: a meta-analysis of 13 randomized trials. *J Am Coll Cardiol*. 2011;58:1569-1577.

Behrouz R, Sullebarger JT, Malek AR. Cardiac manifestations of subarachnoid hemorrhage. *Expert Rev Cardiovasc Ther*. 2011;9:303-307.

Bhandari SK, Pashayan S, Liu IL, Rasgon SA, Kujubu DA, Tom TY, Sim JJ. 25-hydroxyvitamin D levels and hypertension rates. *J Clin Hypertens (Greenwich)*. 2011;13:170-177.

Brar SS, ten Berg J, Marcucci R, Price MJ, Valgimigli M, Kim HS, Patti G, Breet NJ, DiSciascio G, Cuisset T, Dangas G. Impact of platelet reactivity on clinical outcomes after percutaneous coronary intervention. A collaborative meta-analysis of individual participant data. *J Am Coll Cardiol*. 2011;58:1945-1954.

Chi M, Vansomphone S, Cheetham TC, Green K, Reynolds K. Adherence to statins and low-density lipoprotein cholesterol goal attainment in patients with coronary artery disease. *Clin Med Res*. 2011; 9:155-156.

Christiansen SC, Zuraw BL. Hereditary angioedema: management of laryngeal attacks. *Am J Rhinol Allergy*. 2011;25:379-382.

Cooper WO, Habel LA, Sox CM, Chan KA, Arbogast PG, Cheetham TC, Murray KT, Quinn VP, Stein CM, Callahan ST, Fireman BH, Fish FA, Kirshner HS, O'Duffy A, Connell FA, Ray WA. ADHD drugs and serious cardiovascular events in children and young adults. *N Engl J Med*. 2011;365:1896-1904.

Handler J. Seasonal variability of blood pressure in California. *J Clin Hypertens (Greenwich)*. 2011;13:856-860.

Handler J. Taking a family history of hypertension: is there patient care benefit? *J Clin Hypertens (Greenwich)*. 2011;13:133-137.

Handler J. Adverse effects using combined rate-slowing antihypertensive agents. *J Clin Hypertens (Greenwich)*. 2011;13:529-532.

Handler J, Lackland DT. Translation of hypertension treatment guidelines into practice: a review of implementation. *J Am Soc Hypertens*. 2011;5:197-207.

He J, Wofford MR, Reynolds K, Chen J, Chen CS, Myers L, Minor DL, Elmer PJ, Jones DW, Whelton PK. Effect of dietary protein supplementation on blood pressure: a randomized, controlled trial. *Circulation*. 2011;124:589-595. PMID: 3150301.

Hodis HN, Mack WJ, Kono N, Azen SP, Shoupe D, Hwang-Levine J, Petitti D, Whitfield-Maxwell L, Yan M, Franke AA, Selzer RH. Isoflavone soy protein supplementation and atherosclerosis progression in healthy postmenopausal women: a randomized controlled trial. *Stroke*. 2011;42:3168-3175. PMID: 3202054.

Kane GC, Karon BL, Mahoney DW, Redfield MM, Roger VL, Burnett JC, Jr., Jacobsen SJ, Rodeheffer RJ. Progression of left ventricular diastolic dysfunction and risk of heart failure. *JAMA*. 2011;306:856-863. PMID: 3269764.

Lovett KM, Liang BA. Direct-to-consumer cardiac screening and suspect risk evaluation. *JAMA*. 2011;305:2567-2568.

Muntner P, Halanych JH, Reynolds K, Durant R, Vupputuri S, Sung VW, Meschia JF, Howard VJ, Safford MM, Krousel-Wood M. Low medication adherence and the incidence of stroke symptoms among individuals with hypertension: the REGARDS study. *J Clin Hypertens (Greenwich)*. 2011;13:479-486. PMID: 3140118.

Muntner P, Shimbo D, Tonelli M, Reynolds K, Arnett DK, Oparil S. The relationship between visit-to-visit variability in systolic blood pressure and all-cause mortality in the general population: findings from NHANES III, 1988 to 1994. *Hypertension*. 2011;57:160-166.

Sim JJ, Yan EH, Liu IL, Rasgon SA, Kalantar-Zadeh K, Calhoun DA, Derose SF. Positive relationship of sleep apnea to hyperaldosteronism in an ethnically diverse population. *J Hypertens*. 2011;29:1553-1559.

Thompson AM, Hu T, Eshelbrenner CL, Reynolds K, He J, Bazzano LA. Antihypertensive treatment and secondary prevention of cardiovascular disease events among persons without hypertension: a meta-analysis. *JAMA*. 2011;305:913-922.

Wildman RP, McGinn AP, Kim M, Muntner P, Wang D, Cohen HW, Ogorodnikova AD, Reynolds K, Fonseca V. Empirical derivation to improve the definition of the metabolic syndrome in the evaluation of cardiovascular disease risk. *Diabetes Care*. 2011;34:746-748. PMID: 3041220.

Yang-Ting S, Aboulhossn J, Sun XG, Child JS, Sietsema KE. Effects of pulmonary vasodilator therapy on ventilatory efficiency during exercise in adults with Eisenmenger syndrome. *Congenit Heart Dis*. 2011;6:139-146.

Child and Adolescent Health

Affuso O, Stevens J, Catellier D, McMurray RG, Ward DS, Lytle L, Sothorn MS, Young DR. Validity of self-reported leisure-time sedentary behavior in adolescents. *J Negat Results Biomed*. 2011;10:2. PMID: 3046002.

Anderson CB, Masse LC, Zhang H, Coleman KJ, Chang S. Ethnic, gender, and BMI differences in athletic identity in children and adolescents. *J Phys Act Health*. 2011;8:200-209.

Banerjee R, Hersh AL, Newland J, Beekmann SE, Polgreen PM, Bender J, Shaw J, Copelovitch L, Kaplan BS, Shah SS. Streptococcus pneumoniae-associated hemolytic uremic syndrome among children in North America. *Pediatr Infect Dis J*. 2011;30:736-739.

Cohn F. Suddenly "I" was a "them." *Curr Probl Pediatr Adolesc Health Care*. 2011;41:111-112.

Habel LA, Cooper WO, Sox CM, Chan KA, Fireman BH, Arbogast PG, Cheetham TC, Quinn VP, Dublin S, Boudreau DM, Andrade SE, Pawloski PA, Raebel MA, Smith DH, Achacoso N, Uratsu C, Go AS, Sidney S, Nguyen-Huynh MN, Ray WA, Selby JV. ADHD medications and risk of serious cardiovascular events in young and middle-aged adults. *JAMA*. 2011;306:2673-2683.

Hanna L, Cruz SA. Candida mastitis: a case report. *Perm J*. 2011;15:62-64. PMID: 3048637.

Luu JL, Wendtland CL, Gross MF, Mirza F, Zouros A, Zimmerman GJ, Barcega B, Abd-Allah SA. Three-percent saline administration during pediatric critical care transport. *Pediatr Emerg Care*. 2011;27:1113-1117.

Quinto KB, Zuraw BL, Poon KY, Chen W, Schatz M, Christiansen SC. The association of obesity and asthma severity and control in children. *J Allergy Clin Immunol*. 2011;128:964-969.

Shekherdimian S, Lee SL. Management of pediatric intussusception in general hospitals: diagnosis, treatment, and differences based on age. *World J Pediatr*. 2011;7:70-3.

Wong AT, Brady KB, Caldwell AM, Graber NM, Rubin DH, Listman DA. Low-risk criteria for pelvic radiography in pediatric blunt trauma patients. *Pediatr Emerg Care*. 2011;27:92-96.

Wu JJ, Black MH, Smith N, Porter AH, Jacobsen SJ, Koebnick C. Low prevalence of psoriasis among children and adolescents in a large multiethnic cohort in southern California. *J Am Acad Dermatol*. 2011;65:957-964.

Dermatology

Aquino LL, Wu JJ. Cutaneous manifestations of category A bioweapons. *J Am Acad Dermatol*. 2011;65:1213 e1211-1213 e1215.

Bernaba BN, Vogiatzis PI, Binder SW, Cassarino DS. Potentially useful markers for desmoplastic melanoma: an analysis of KBA.62, p-AKT, and ezrin. *Am J Dermatopathol*. 2011;33:333-337; quiz 338-340.

Fleming KF, Wu JJ, Dyson SW, Tsuchiya AM. Unilateral multisegmental morphea. *Cutis*. 2011;88:41-42.

Nageh MF. Elevated defibrillation threshold despite programmable tilt, pulse width, or implant of subcutaneous coil: role of higher energy devices. *Pacing Clin Electrophysiol*. 2011.

Scott TD. Best face forward: a commonsense guide to acne treatment. *Adv NPs PAs*. 2011;2:24-6.

Wu JJ, Fleming KF. Interaction between adalimumab with concurrent pregabalin and duloxetine administration in a psoriasis patient with diabetic peripheral neuropathy. *Cutis*. 2011;87:249-250.

Diabetes

Black MH, Anderson A, Bell RA, Dabelea D, Pihoker C, Saydah S, Seid M, Standiford DA, Waitzfelder B, Marcovina SM, Lawrence JM. Prevalence of asthma and its association with glycemic control among youth with diabetes. *Pediatrics*. 2011;128:e839-847.

Bortsov A, Liese AD, Bell RA, Dabelea D, D'Agostino Jr RB, Hamman RF, Klingensmith GJ, Lawrence JM, Maahs DM, McKeown R, Marcovina SM, Thomas J, Mayer-Davis EJ. Response to insulin regimen-associated differences in diets of preadolescents with type 1 diabetes. *J of Nutr Educ Behav*. 2011;43:e6.

Bortsov A, Liese AD, Bell RA, Dabelea D, D'Agostino RB, Jr., Hamman RF, Klingensmith GJ, Lawrence JM, Maahs DM, McKeown R, Marcovina SM, Thomas J, Mayer-Davis EJ. Correlates of dietary intake in youth with diabetes: results from the SEARCH for diabetes in youth study. *J Nutr Educ Behav*. 2011;43:123-129. PMID: 3055946.

Bortsov AV, Liese AD, Bell RA, Dabelea D, D'Agostino RB, Jr., Hamman RF, Klingensmith GJ, Lawrence JM, Maahs DM, McKeown R, Marcovina SM, Thomas J, Williams DE, Mayer-Davis EJ. Sugar-sweetened and diet beverage consumption is associated with cardiovascular risk factor profile in youth with type 1 diabetes. *Acta Diabetol*. 2011;48:275-282.

Colayco DC, Niu F, McCombs JS, Cheetham TC. A1C and cardiovascular outcomes in type 2 diabetes: a nested case-control study. *Diabetes Care*. 2011;34:77-83. PMID: 3005458.

Dabelea D, Dolan LM, D'Agostino R, Jr., Hernandez AM, McAteer JB, Hamman RF, Mayer-Davis EJ, Marcovina S, Lawrence JM, Pihoker C, Florez JC. Association testing of TCF7L2 polymorphisms with type 2 diabetes in multi-ethnic youth. *Diabetologia*. 2011;54:535-539.

Dabelea D, Pihoker C, Talton JW, D'Agostino RB, Jr., Fujimoto W, Klingensmith GJ, Lawrence JM, Linder B, Marcovina SM, Mayer-Davis EJ, Imperatore G, Dolan LM. Etiological approach to characterization of diabetes type: the SEARCH for Diabetes in Youth Study. *Diabetes Care*. 2011;34:1628-1633. PMCID: 3120176.

Fiallo-Scharer R, Cheng J, Beck RW, Buckingham BA, Chase HP, Kollman C, Laffel L, Lawrence JM, Mauras N, Tamborlane WV, Wilson DM, Wolpert H. Factors predictive of severe hypoglycemia in type 1 diabetes: analysis from the Juvenile Diabetes Research Foundation continuous glucose monitoring randomized control trial dataset. *Diabetes Care*. 2011;34:586-590. PMCID: 3041185.

Lee JM, Rhee K, O'Grady M J, Basu A, Winn A, John P, Meltzer DO, Kollman C, Laffel LM, Lawrence JM, Tamborlane WV, Wysocki T, Xing D, Huang ES. Health utilities for children and adults with type 1 diabetes. *Med Care*. 2011;49:924-931. PMCID: 3210197

Liese AD, Bortsov A, Gunther AL, Dabelea D, Reynolds K, Standiford DA, Liu L, Williams DE, Mayer-Davis EJ, D'Agostino RB, Jr., Bell R, Marcovina S. Association of DASH diet with cardiovascular risk factors in youth with diabetes mellitus: the SEARCH for Diabetes in Youth study. *Circulation*. 2011;123:1410-1417.

Nuckols TK, McGlynn EA, Adams J, Lai J, Go MH, Keesey J, Aledort JE. Cost implications to health care payers of improving glucose management among adults with type 2 diabetes. *Health Serv Res*. 2011;46:1158-1179.

Pojoga LH, Underwood PC, Goodarzi MO, Williams JS, Adler GK, Jeunemaitre X, Hopkins PN, Raby BA, Lasky-Su J, Sun B, Cui J, Guo X, Taylor KD, Chen YD, Xiang A, Raffel LJ, Buchanan TA, Rotter JI, Williams GH. Variants of the caveolin-1 gene: a translational investigation linking insulin resistance and hypertension. *J Clin Endocrinol Metab*. 2011;96:E1288-1292. PMCID: 3146791.

Reynolds K, Liese AD, Anderson AM, Dabelea D, Standiford D, Daniels SR, Waitzfelder B, Case D, Loots B, Imperatore G, Lawrence JM. Prevalence of tobacco use and association between cardiometabolic risk factors and cigarette smoking in youth with type 1 or type 2 diabetes mellitus. *J Pediatr*. 2011;158:594-601 e591.

Waitzfelder B, Pihoker C, Klingensmith G, Case D, Anderson A, Bell RA, Lawrence JM, Mayer-Davis EJ, Imperatore G, Standiford D, Rodriguez BL, Dabelea D, Seid M. Adherence to guidelines for youths with diabetes mellitus. *Pediatrics*. 2011;128:531-538. PMCID: 3164090.

Wilson DM, Xing D, Cheng J, Beck RW, Hirsch I, Kollman C, Laffel L, Lawrence JM, Mauras N, Ruedy KJ, Tsalikian E, Wolpert H. Persistence of individual variations in glycated hemoglobin: analysis of data from the Juvenile Diabetes Research Foundation Continuous Glucose Monitoring Randomized Trial. *Diabetes Care*. 2011;34:1315-1317. PMCID: 3114360.

Digestive System Disorders

Leber AL, Novak-Weekley S. Intestinal and urogenital amebae, flagellates, and ciliates. Versalovic J, Carroll KC, Funke G, Jorgensen JH, Landry ML, eds. *Manual of Clinical Microbiology*, 10th ed. Washington, DC: ASM Press. 2011.

Lim BS, Leung JW, Lee J, Yen D, Beckett L, Tancredi D, Leung FW. Effect of ERCP mechanical simulator (EMS) practice on trainees' ERCP performance in the early learning period: U.S. multicenter randomized controlled trial. *Am J Gastroenterol*. 2011;106:300-306.

Wu BU. Editorial: fluid resuscitation in acute pancreatitis: striking the right balance. *Am J Gastroenterol*. 2011;106:1851-1852.

Emergency Medicine

Gabayan GZ, Derose SF, Asch SM, Yiu S, Lancaster EM, Poon KT, Hoffman JR, Sun BC. Patterns and predictors of short-term death after emergency department discharge. *Ann Emerg Med*. 2011;58:551-558 e552.

Johna S. Limitations in resident work hours: are we preaching to the choir? That is the question! *Arch Surg*. 2011;146:11.

Johna S, Klaristenfeld D. Surgery resident training in endoscopy: the saga continues. *Arch Surg*. 2011;146:899-900.

Eye Research

Nelson KD, McSoley JJ. Clinical findings and management of conjunctival intraepithelial neoplasia. *Optometry*. 2011;82:15-21.

Shafizadeh N, Kakar S. Diagnosis of well-differentiated hepatocellular lesions: role of immunohistochemistry and other ancillary techniques. *Adv Anat Pathol*. 2011;18:438-445.

Genetics

Beaudoin DE, Longo N, Logan RA, Jones JP, Mitchell JA. Using information prescriptions to refer patients with metabolic conditions to the Genetics Home Reference website. *J Med Libr Assoc*. 2011;99:70-76. PMID: 3016649.

Reddy KS, Mardach R, Bass H. Oligoarray (105K) CGH analysis of chromosome microdeletions within 10q24.1q24.32. *Cytogenet Genome Res*. 2011;132:113-120.

Gestational Diabetes Mellitus

Lawrence JM. Women with diabetes in pregnancy: different perceptions and expectations. *Best Pract Res Clin Obstet Gynaecol*. 2011;25:15-24.

Xiang AH, Li BH, Black MH, Sacks DA, Buchanan TA, Jacobsen SJ, Lawrence JM. Racial and ethnic disparities in diabetes risk after gestational diabetes mellitus. *Diabetologia*. 2011;54:3016-3021.

Head and Neck

Mynatt CJ, Feldman KA, Thompson LD. Orbital infantile myofibroma: a case report and clinicopathologic review of 24 cases from the literature. *Head Neck Pathol*. 2011;5:205-215. PMID: 3173528.

Shin JJ, Rauch SD, Wasserman J, Coblens O, Randolph GW. Evidence-based medicine in otolaryngology, part 2: the current state of affairs. *Otolaryngol Head Neck Surg*. 2011;144:331-337.

Thompson LD. Allergic fungal sinusitis. *Ear Nose Throat J*. 2011;90:106-107.

Thompson LD. Chordoma. *Ear Nose Throat J*. 2011;90:16-18.

Thompson LD. Hyalinizing trabecular adenoma of the thyroid gland. *Ear Nose Throat J*. 2011;90:416-417.

Thompson LD. Ear ceruminous adenoma. *Ear Nose Throat J*. 2011;90:304-305.

Thompson LD. Laryngeal spindle cell squamous cell carcinoma. *Ear Nose Throat J*. 2011;90:214-216.

Thompson LD. Oral traumatic ulcer. *Ear Nose Throat J.* 2011;90:518-534.

Wolfish EB, Nelson BL, Thompson LD. Sinonasal tract mucoepidermoid carcinoma: a clinicopathologic and immunophenotypic study of 19 cases combined with a comprehensive review of the literature. *Head Neck Pathol.* 2011.

Health Equity

Fancher TL, Keenan C, Meltvedt C, Stocker T, Harris T, Morfin J, McCarron R, Kulkarni-Date M, Henderson MC. An academic-community partnership to improve care for the underserved. *Acad Med.* 2011;86:252-258.

Lee SL, Shekherdimian S, Chiu VY. Effect of race and socioeconomic status in the treatment of appendicitis in patients with equal health care access. *Arch Surg.* 2011;146:156-161.

HIV/AIDS

Chao C, Xu L, Abrams DI, Towner WJ, Horberg MA, Leyden WA, Silverberg MJ. HMG-CoA reductase inhibitors (statins) use and risk of non-Hodgkin lymphoma in HIV-positive persons. *AIDS.* 2011;25:1771-1777.

Horberg M, Hurley L, Towner W, Gambatese R, Klein D, Antoniskis D, Weinberg W, Kadlecik P, Remmers C, Dobrinich R, Quesenberry C, Silverberg M, Johnson M. HIV quality performance measures in a large integrated health care system. *AIDS Patient Care STDS.* 2011;25:21-28.

Ouellet LJ, Golub ET, Hudson S, Hagan H, Garfein RS, Mackesy-Amity ME. Predictors and correlates of reduced frequency or cessation of injection drug use during a randomized HIV prevention intervention trial. *Addiction.* 2011;106:601-8.

Wohl AR, Carlos JA, Tejero J, Dierst-Davies R, Daar ES, Khanlou H, Cadden J, Towner W, Frye D. Barriers and unmet need for supportive services for HIV patients in care in Los Angeles County, California. *AIDS Patient Care STDS.* 2011;25:525-532.

Hospital Services

Gould MK, Jones JP. Thromboprophylaxis in the real world: strengths and limitations of comparative effectiveness research. *Chest.* 2011;140:1401-1404.

Kibler J, Lee M. Improving patient transfer between the Intensive Care Unit and the Medical/Surgical floor of a 200-bed hospital in southern California. *J Healthc Qual.* 2011;33:68-76.

Lau H, Litman KC. Saving lives by studying deaths: using standardized mortality reviews to improve inpatient safety. *Jt Comm J Qual Patient Saf.* 2011;37:400-408.

Lee EA, Malatt C. Making the hospital safer for older adult patients: a focus on the indwelling urinary catheter. *Perm J.* 2011;15:49-52. PMID: 3048634.

Lee SL, Yaghoubian A, de Virgilio C. A multi-institutional comparison of pediatric appendicitis outcomes between teaching and nonteaching hospitals. *J Surg Educ.* 2011;68:6-9.

Nelson C, Chand P, Sortais J, Oloimooja J, Rembert G. Inpatient palliative care consults and the probability of hospital readmission. *Perm J.* 2011;15:48-51. PMID: 3140749.

Sud S, Mittmann N, Cook DJ, Geerts W, Chan B, Dodek P, Gould MK, Guyatt G, Arabi Y, Fowler RA. Screening and prevention of venous thromboembolism in critically ill patients: a decision analysis and economic evaluation. *Am J Respir Crit Care Med.* 2011;184:1289-1298.

Woller SC, Stevens SM, Jones JP, Lloyd JF, Evans RS, Aston VT, Elliott CG. Derivation and validation of a simple model to identify venous thromboembolism risk in medical patients. *Am J Med.* 2011;124:947-954 e942.

Wong E, Li Q. Faculty discernment of student registered nurse anesthetist's personality characteristics that contribute to safe and unsafe nurse anesthesia practice: metrics of excellence. *AANA J.* 2011;79:227-235.

Infectious Disease

Marlowe EM, Novak-Weekley SM, Cumpio J, Sharp SE, Momeny MA, Babst A, Carlson JS, Kawamura M, Pandori M. Evaluation of the Cepheid Xpert MTB/RIF assay for direct detection of Mycobacterium tuberculosis complex in respiratory specimens. *J Clin Microbiol.* 2011;49:1621-3.

Martinez-Hernandez E, Horvath J, Shiloh-Malawsky Y, Sangha N, Martinez-Lage M, Dalmau J. Analysis of complement and plasma cells in the brain of patients with anti-NMDAR encephalitis. *Neurology.* 2011;77:589-93.

Rubach MP, Bender JM, Mottice S, Hanson K, Weng HY, Korgenski K, Daly JA, Pavia AT. Increasing incidence of invasive Haemophilus influenzae disease in adults, Utah, USA. *Emerg Infect Dis.* 2011;17:1645-50.

Kidney Disease

Crabtree JH. Is the Tenckhoff catheter still the first choice for use with peritoneal dialysis? *Semin Dial.* 2011;24:447-448.

Huynh J, Hever A, Tom T, Sim JJ. Indinavir-induced nephrolithiasis three and one-half years after cessation of indinavir therapy. *Int Urol Nephrol.* 2011;43:571-573. PMID: 3094655.

Kahwaji J, Bunnapradist S, Hsu JW, Idroos ML, Dudek R. Cause of death with graft function among renal transplant recipients in an integrated healthcare system. *Transplantation.* 2011;91:225-230.

Kumar VA. Calcific uremic arteriopathy: an underrecognized entity. *Perm J.* 2011;15:85-87. PMID: 3140755.

Kumar VA, Kujubu DA, Sim JJ, Rasgon SA, Yang PS. Vitamin D supplementation and recombinant human erythropoietin utilization in vitamin D-deficient hemodialysis patients. *J Nephrol.* 2011;24:98-105.

Sampaio MS, Molnar MZ, Kovesdy CP, Mehrotra R, Mucsi I, Sim JJ, Krishnan M, Nissenson AR, Kalantar-Zadeh K. Association of pretransplant serum phosphorus with posttransplant outcomes. *Clin J Am Soc Nephrol.* 2011;6:2712-2721.

Sim JJ, Shi J, Calara F, Rasgon S, Jacobsen S, Kalantar-Zadeh K. Association of plasma renin activity and aldosterone-renin ratio with prevalence of chronic kidney disease: the Kaiser Permanente Southern California cohort. *J Hypertens.* 2011;29:2226-2235.

Stangou M, Bhangal G, Lai PC, Smith J, Keith JC Jr, Boyle JJ, Pusey CD, Cook T, Tam FW. Effect of IL-11 on glomerular expression of TGF-beta and extracellular matrix in nephrotoxic nephritis in Wistar Kyoto rats. *J Nephrol.* 2011;24:106-11.

Taylor LM, Kalantar-Zadeh K, Markewich T, Colman S, Benner D, Sim JJ, Kovesdy CP. Dietary egg whites for phosphorus control in maintenance haemodialysis patients: a pilot study. *J Ren Care.* 2011;37:16-24.

Men's Health

Blumberg JM, Kwon EO, Cheetham TC, Niu F, Shapiro CE, Pacificar J, Loo RK, Williams SG, Chien GW. Early development of castrate resistance varies with different dosing regimens of luteinizing hormone releasing hormone agonist in primary hormonal therapy for prostate cancer. *Urology*. 2011;77:412-416.

Gleason JM, Slezak JM, Jung H, Reynolds K, Van den Eeden SK, Haque R, Quinn VP, Loo RK, Jacobsen SJ. Regular nonsteroidal anti-inflammatory drug use and erectile dysfunction. *J Urol*. 2011;185:1388-1393.

Handler J. Managing erectile dysfunction in hypertensive patients. *J Clin Hypertens (Greenwich)*. 2011;13:450-454.

Jacobson DJ, St Sauver JL, Parker AS, McGree ME, Sarma AV, Girman CJ, Lieber MM, Jacobsen SJ. Estimation of prostate size in community-dwelling men. *Urology*. 2011;77:422-426. PMID: 3010416.

Liss MA, Chang A, Santos R, Nakama-Peebles A, Peterson EM, Osann K, Billimek J, Szabo RJ, Dash A. Prevalence and significance of fluoroquinolone resistant *Escherichia coli* in patients undergoing transrectal ultrasound guided prostate needle biopsy. *J Urol*. 2011;185:1283-1288.

Sassani P, Blumberg JM, Cheetham TC, Niu F, Williams SG, Chien GW. Black men have lower rates than white men of biochemical failure with primary androgen-deprivation therapy. *Perm J*. 2011;15:4-8. PMID: 3200099.

Schulz RJ, Kagan AR. Dose escalation in the radiation therapy of prostate cancer. *Int J Radiat Oncol Biol Phys*. 2011;80:1289-1291.

St Sauver JL, Jacobsen SJ, Jacobson DJ, McGree ME, Girman CJ, Nehra A, Roger VL, Lieber MM. Statin use and decreased risk of benign prostatic enlargement and lower urinary tract symptoms. *BJU Int*. 2011;107:443-450. PMID: 2997141.

St Sauver JL, Jacobson DJ, McGree ME, Girman CJ, Klee GG, Lieber MM, Jacobsen SJ. Associations between longitudinal changes in serum estrogen, testosterone, and bioavailable testosterone and changes in benign urologic outcomes. *Am J Epidemiol*. 2011;173:787-796. PMID: 3070494.

St Sauver JL, Lieber MM, Slager SL, Jacobson DJ, McGree ME, Jacobsen SJ. Associations between variants in the cyclooxygenase 2 enzyme gene (PTGS2) and development of benign prostate enlargement. *BJU Int*. 2011; 108:1610-5.

St Sauver JL, Sandroni P, Jacobson DJ, McGree ME, Lieber MM, Jacobsen SJ. Measures of autonomic nervous system activity and lower urinary tract symptoms. *Clin Auton Res*. 2011;21:61-64.

St Sauver JL, Sarma AV, Hollingsworth JM, Jacobson DJ, McGree ME, Dunn RL, Lieber MM, Jacobsen SJ. Associations between modest weight changes and onset and progression of lower urinary tract symptoms in two population-based cohorts. *Urology*. 2011;78:437-441. PMID: 3152683.

Wallner LP, Morgenstern H, McGree ME, Jacobson DJ, St Sauver JL, Jacobsen SJ, Sarma AV. The effects of metabolic conditions on prostate cancer incidence over 15 years of follow-up: results from the Olmsted County Study. *BJU Int*. 2011;107:929-935. PMID: 3099535.

Wallner LP, Morgenstern H, McGree ME, Jacobson DJ, St Sauver JL, Jacobsen SJ, Sarma AV. The effects of type 2 diabetes and hypertension on changes in serum prostate specific antigen levels: results from the Olmsted County study. *Urology*. 2011;77:137-141. PMID: 3014381.

Wallner LP, Morgenstern H, McGree ME, Jacobson DJ, St Sauver JL, Jacobsen SJ, Sarma AV. The effects of body mass index on changes in prostate-specific antigen levels and prostate volume over 15 years of follow-up: implications for prostate cancer detection. *Cancer Epidemiol Biomarkers Prev.* 2011;20:501-508. PMCID: 3051000.

Wuerstle MC, Van Den Eeden SK, Poon KT, Quinn VP, Hollingsworth JM, Loo RK, Jacobsen SJ. Contribution of common medications to lower urinary tract symptoms in men. *Arch Intern Med.* 2011;171:1680-1682. PMCID: 3351272.

Mental Health

Bota RG, Preda A. The self and Asperger syndrome. *South Med J.* 2011;104:250-251.

Grenard JL, Munjas BA, Adams JL, Suttrop M, Maglione M, McGlynn EA, Gellad WF. Depression and medication adherence in the treatment of chronic diseases in the United States: a meta-analysis. *J Gen Intern Med.* 2011;26:1175-82.

Neurological Disorders

Armstrong EP, Malone DC, McCarberg B, Panarites CJ, Pham SV. Cost-effectiveness analysis of a new 8 percent capsaicin patch compared to existing therapies for postherpetic neuralgia. *Curr Med Res Opin.* 2011; 27:939-50.

Langer-Gould A, Huang S, Van Den Eeden SK, Gupta R, Leimpeter AD, Albers KB, Horst R, Hollis B, Steinman L, Nelson LM. Vitamin D, pregnancy, breastfeeding, and postpartum multiple sclerosis relapses. *Arch Neurol.* 2011;68:310-313.

Langer-Gould A, Zhang JL, Chung J, Yeung Y, Waubant E, Yao J. Incidence of acquired CNS demyelinating syndromes in a multiethnic cohort of children. *Neurology.* 2011;77:1143-1148. PMCID: 3265045.

O'Neill J, Seese R, Hudkins M, Siddarth P, Levitt J, Tseng PB, Wu KN, Gurbani S, Shields WD, Caplan R. 1H MRSI and social communication deficits in pediatric complex partial seizures. *Epilepsia.* 2011;52:1705-1714.

Sarco DP, Boyer K, Lundy-Krigbaum SM, Takeoka M, Jensen F, Gregas M, Waber DP. Benign rolandic epileptiform discharges are associated with mood and behavior problems. *Epilepsy Behav.* 2011;22:298-303.

Tosun D, Caplan R, Siddarth P, Seidenberg M, Gurbani S, Toga AW, Hermann B. Intelligence and cortical thickness in children with complex partial seizures. *Neuroimage.* 2011;57:337-345. PMCID: 3117889.

Obesity

Bergman RN, Stefanovski D, Buchanan TA, Sumner AE, Reynolds JC, Sebring NG, Xiang AH, Watanabe RM. A better index of body adiposity. *Obesity (Silver Spring).* 2011;19:1083-1089. PMCID: 3275633.

Koebnick C, Black MH, Smith N, Der-Sarkissian JK, Porter AH, Jacobsen SJ, Wu JJ. The association of psoriasis and elevated blood lipids in overweight and obese children. *J Pediatr.* 2011;159:577-583. PMCID: 3168116.

Koebnick C, Coleman KJ, Black MH, Smith N, Der-Sarkissian JK, Jacobsen SJ, Porter AH. Cohort Profile: The KPSC Children's Health Study, a population-based study of 920,000 children and adolescents in southern California. *Int J Epidemiol.* 2011.

Koebnick C, Getahun D, Smith N, Porter AH, Der-Sarkissian JK, Jacobsen SJ. Extreme childhood obesity is associated with increased risk for gastroesophageal reflux disease in a large population-based study. *Int J Pediatr Obes*. 2011;6:e257-263.

Peart T, Velasco Mondragon HE, Rohm-Young D, Bronner Y, Hossain MB. Weight status in US youth: the role of activity, diet, and sedentary behaviors. *Am J Health Behav*. 2011;35:756-764.

Svetkey LP, Ard JD, Stevens VJ, Loria CM, Young DY, Hollis JF, Appel LJ, Brantley PJ, Kennedy BM, Kumanyika SK, Batch BC, Corsino L, Lien LF, Vollmer WM. Predictors of long-term weight loss in adults with modest initial weight loss, by sex and race. *Obesity (Silver Spring)*. 2011.

Wildman RP, McGinn AP, Lin J, Wang D, Muntner P, Cohen HW, Reynolds K, Fonseca V, Sowers MR. Cardiovascular disease risk of abdominal obesity vs. metabolic abnormalities. *Obesity (Silver Spring)*. 2011;19:853-860. PMID: 3065535.

Orthopedic Care

Cameron AP, Wallner LP, Forchheimer MB, Clemens JQ, Dunn RL, Rodriguez G, Chen D, Horton J, 3rd, Tate DG. Medical and psychosocial complications associated with method of bladder management after traumatic spinal cord injury. *Arch Phys Med Rehabil*. 2011;92:449-456.

Dell R. Fracture prevention in Kaiser Permanente Southern California. *Osteoporos Int*. 2011;22 Suppl 3:457-60.

Finkle WD, Der JS, Greenland S, Adams JL, Ridgeway G, Blaschke T, Wang Z, Dell RM, VanRiper KB. Risk of fractures requiring hospitalization after an initial prescription for zolpidem, alprazolam, lorazepam, or diazepam in older adults. *J Am Geriatr Soc*. 2011;59:1883-90.

Jazayeri R, Kwon YW. Evolution of the reverse total shoulder prosthesis. *Bull NYU Hosp Jt Dis*. 2011;69:50-55.

Khan N, Levin SD, Domont ZB, Wu YN, Ren Y, Zhang LQ. Strain effects of placing an arthroscopic portal through the subscapularis tendon. *J Shoulder Elbow Surg*. 2011;20:33-38.

Khatod M, Inacio MC, Bini SA, Paxton EW. Prophylaxis against pulmonary embolism in patients undergoing total hip arthroplasty. *J Bone Joint Surg Am*. 2011;93:1767-1772.

Namba RS, Inacio MC, Paxton EW, Robertsson O, Graves SE. The role of registry data in the evaluation of mobile-bearing total knee arthroplasty. *J Bone Joint Surg Am*. 2011;93 Suppl 3:48-50.

Navarro RA, Greene DF, Burchette R, Funahashi T, Dell R. Minimizing disparities in osteoporosis care of minorities with an electronic medical record care plan. *Clin Orthop Relat Res*. 2011;469:1931-1935. PMID: 3111780.

Nielson CM, Marshall LM, Adams AL, LeBlanc ES, Cawthon PM, Ensrud K, Stefanick ML, Barrett-Connor E, Orwoll ES. BMI and fracture risk in older men: the osteoporotic fractures in men study (MrOS). *J Bone Miner Res*. 2011;26:496-502. PMID: 3179296.

Paxton EW, Furnes O, Namba RS, Inacio MC, Fenstad AM, Havelin LI. Comparison of the Norwegian knee arthroplasty register and a United States arthroplasty registry. *J Bone Joint Surg Am*. 2011;93 Suppl 3:20-30.

Pretorius RG, Belinson JL, Burchette RJ, Hu S, Zhang X, Qiao YL. Regardless of skill, performing more biopsies increases the sensitivity of colposcopy. *J Low Genit Tract Dis*. 2011;15:180-8.

Sedrakyan A, Paxton EW, Phillips C, Namba R, Funahashi T, Barber T, Sculco T, Padgett D, Wright T, Marinac-Dabic D. The International Consortium of Orthopaedic Registries: overview and summary. *J Bone Joint Surg Am*. 2011;93 Suppl 3:1-12.

Pain Medicine

McCarberg BH. A critical assessment of opioid treatment adherence using urine drug testing in chronic pain management. *Postgrad Med*. 2011;123:124-131.

McCarberg BH. Chronic pain: reducing costs through early implementation of adherence testing and recognition of opioid misuse. *Postgrad Med*. 2011;123:132-139.

McCarberg BH. Pain management in primary care: strategies to mitigate opioid misuse, abuse, and diversion. *Postgrad Med*. 2011;123:119-130.

McCarberg BH, Ruoff GE, Tenzer-Iglesias P, Weil AJ. Diagnosis and treatment of low-back pain because of paraspinous muscle spasm: a physician roundtable. *Pain Med*. 2011;12 Suppl 4:S119-127.

Moskovitz BL, Benson CJ, Patel AA, Chow W, Mody SH, McCarberg BH, Kim MS. Analgesic treatment for moderate-to-severe acute pain in the United States: patients' perspectives in the Physicians Partnering Against Pain (P3) survey. *J Opioid Manag*. 2011;7:277-286.

Peng PW, Cheng P. Ultrasound-guided interventional procedures in pain medicine: a review of anatomy, sonoanatomy, and procedures. Part III: Shoulder. *Reg Anesth Pain Med*. 2011;36:592-605.

Pharmacoepidemiology

Macy E, Ho NJ. Adverse reactions associated with therapeutic antibiotic use after penicillin skin testing. *Perm J*. 2011;15:31-37. PMID: 3140745.

Michels SL, Collins J, Reynolds MW, Abramsky S, Paredes-Diaz A, McCarberg B. Over-the-counter ibuprofen and risk of gastrointestinal bleeding complications: a systematic literature review. *Curr Med Res Opin*. 2012;28:89-99.

Spence MM, Polzin JK, Weisberger CL, Martin JP, Rho JP, Willick GH. Evaluation of a pharmacist-managed amiodarone monitoring program. *J Manag Care Pharm*. 2011;17:513-522.

Zhao P, Zhang L, Grillo JA, Liu Q, Bullock JM, Moon YJ, Song P, Brar SS, Madabushi R, Wu TC, Booth BP, Rahman NA, Reynolds KS, Gil Berglund E, Lesko LJ, Huang SM. Applications of physiologically based pharmacokinetic (PBPK) modeling and simulation during regulatory review. *Clin Pharmacol Ther*. 2011;89:259-267.

Prevention and Behavior Change

Coleman KJ, Clark AY, Shordon M, Ocana LL, Walker C, Araujo RA, Oratowski-Coleman J, Philis-Tsimikas A. Teen peer educators and diabetes knowledge of low-income fifth grade students. *J Community Health*. 2011;36:23-26.

Gombar EN, Smith-Stoner M, Mitchell-Mattera SD. 10 organizational characteristics that may prevent falls in home healthcare and hospice. *Home Healthc Nurse*. 2011;29:26-32; quiz 33-24.

Maxwell AE, Crespi CM, Alano RE, Sudan M, Bastani R. Health risk behaviors among five Asian American subgroups in California: identifying intervention priorities. *J Immigr Minor Health*. 2011. PMID: 3298627.

Moore AA, Blow FC, Hoffing M, Welgreen S, Davis JW, Lin JC, Ramirez KD, Liao DH, Tang L, Gould R, Gill M, Chen O, Barry KL. Primary care-based intervention to reduce at-risk drinking in older adults: a randomized controlled trial. *Addiction*. 2011;106:111-120. PMID: 3059722.

Terpstra J, Coleman KJ, Simon G, Nebeker C. The role of community health workers (CHWs) in health promotion research: ethical challenges and practical solutions. *Health Promot Pract*. 2011;12:86-93.

Rheumatology

Arnold LM, Clauw DJ, McCarberg BH. Improving the recognition and diagnosis of fibromyalgia. *Mayo Clin Proc*. 2011;86:457-464. PMID: 3084648.

Clauw DJ, Arnold LM, McCarberg BH. The science of fibromyalgia. *Mayo Clin Proc*. 2011;86:907-911. PMID: 3258006.

Surgical Care

Abbas MA, Jackson CH, Haigh PI. Predictors of outcome for anal fistula surgery. *Arch Surg*. 2011;146:1011-1016

Chhadia AM, Inacio MC, Maletis GB, Csintalan RP, Davis BR, Funahashi TT. Are meniscus and cartilage injuries related to time to anterior cruciate ligament reconstruction? *Am J Sports Med*. 2011;39:1894-1899.

Chun L, Abbas MA. Rectourethral fistula following laparoscopic radical prostatectomy. *Tech Coloproctol*. 2011;15:297-300.

Guppy KH, Hou L, Moes GS, Sahrakar K. Spinal intradural, extramedullary anaplastic ependymoma with an extradural component: Case report and review of the literature. *Surg Neurol Int*. 2011;2:119. PMID: 3172008.

Haigh PI, Bilimoria KY, DiFronzo LA. Early postoperative outcomes after pancreaticoduodenectomy in the elderly. *Arch Surg*. 2011;146:715-723.

Hurwitz RS. Feminizing surgery for disorders of sex development: evolution, complications, and outcomes. *Curr Urol Rep*. 2011;12:166-172.

Inacio MC, Paxton EW, Chen Y, Harris J, Eck E, Barnes S, Namba RS, Ake CF. Leveraging electronic medical records for surveillance of surgical site infection in a total joint replacement population. *Infect Control Hosp Epidemiol*. 2011;32:351-359.

Kamrava A, Collins JC. A decade of selective use of adjustable cutting seton combined with fistulotomy for anal fistula. *Am Surg*. 2011;77:1377-1380.

Kao KT, Giap AQ, Abbas MA. Endoscopic excision of large colorectal polyps as a viable alternative to surgical resection. *Arch Surg*. 2011;146:690-696.

Lau B, DiFronzo LA. An acute care surgery model improves timeliness of care and reduces hospital stay for patients with acute cholecystitis. *Am Surg*. 2011;77:1318-1321.

Lau B, Romero LM. Does preoperative magnetic resonance imaging beneficially alter surgical management of invasive lobular carcinoma? *Am Surg*. 2011;77:1368-1371.

Lee SL, Gleason JM, Sydorak RM. A critical review of premature infants with inguinal hernias: optimal timing of repair, incarceration risk, and postoperative apnea. *J Pediatr Surg*. 2011;46:217-220.

Maletis GB, Granan LP, Inacio MC, Funahashi TT, Engebretsen L. Comparison of community-based ACL reconstruction registries in the U.S. and Norway. *J Bone Joint Surg Am*. 2011;93 Suppl 3:31-6.

Matsuda DK. The case for cam surveillance: the arthroscopic detection of cam femoroacetabular impingement missed on preoperative imaging and its significance. *Arthroscopy*. 2011;27:870-876.

Matsuda DK, Carlisle JC, Arthurs SC, Wierks CH, Philippon MJ. Comparative systematic review of the open dislocation, mini-open, and arthroscopic surgeries for femoroacetabular impingement. *Arthroscopy*. 2011;27:252-269.

Nygaard I, Brubaker L, Chai TC, Markland AD, Menefee SA, Sirls L, Sutkin G, Zimmern P, Arisco A, Huang L, Tennstedt S, Stoddard A. Risk factors for urinary tract infection following incontinence surgery. *Int Urogynecol J*. 2011;22:1255-1265.

Putchakayala K, Difronzo LA. D2 lymph node dissection improves staging in patients with gastric adenocarcinoma. *Am Surg*. 2011;77:1326-1329.

Regadas FS, Haas EM, Abbas MA, Marcio Jorge J, Habr-Gama A, Sands D, Wexner SD, Melo-Amaral I, Sardinas C, Lima DM, Sagae UE, Murad-Regadas SM. Prospective multicenter trial comparing echodefecography with defecography in the assessment of anorectal dysfunction in patients with obstructed defecation. *Dis Colon Rectum*. 2011;54:686-692.

Robertsson O, Mendenhall S, Paxton EW, Inacio MC, Graves S. Challenges in prosthesis classification. *J Bone Joint Surg Am*. 2011;93 Suppl 3:72-75.

Schwartz HC. Efficient surgical management of mandibular asymmetry. *J Oral Maxillofac Surg*. 2011;69:645-654.

Shin JJ, Keamy DG, Jr., Steinberg EA. Medical and surgical interventions for hearing loss associated with congenital cytomegalovirus: a systematic review. *Otolaryngol Head Neck Surg*. 2011;144:662-675.

Tang T, Johna S. Laparoscopic excision of a preperitoneal incidentaloma. *JSL S*. 2011;15:400-402. PMID: 3183556.

Thistle JL, Longstreth GF, Romero Y, Arora AS, Simonson JA, Diehl NN, Harmsen WS, Zinsmeister AR. Factors that predict relief from upper abdominal pain after cholecystectomy. *Clin Gastroenterol Hepatol*. 2011;9:891-896.

Thompson J, Bordi S, Boytim M, Elisha S, Heiner J, Nagelhout J. Anesthesia case management for bariatric surgery. *AANA J*. 2011;79:147-160.

Tse DG, Han SM, Charuworn B, Kaufer ES. Video-assisted thoracoscopic surgical tracheobronchoplasty for tracheobronchomalacia. *J Thorac Cardiovasc Surg*. 2011;142:714-716.

Wexler A. Owning our complications. *Plast Reconstr Surg*. 2011;128:105e-106e.

Yeh MW, Wiseman JE, Chu SD, Ituarte PH, Liu IL, Young KL, Kang SJ, Harari A, Haigh PI. Population-level predictors of persistent hyperparathyroidism. *Surgery*. 2011;150:1113-1119.

Vaccine Safety and Effectiveness

Baggs J, Gee J, Lewis E, Fowler G, Benson P, Lieu T, Naleway A, Klein NP, Baxter R, Belongia E, Glanz J, Hambidge SJ, Jacobsen SJ, Jackson L, Nordin J, Weintraub E. The Vaccine Safety Datalink: a model for monitoring immunization safety. *Pediatrics*. 2011;127 Suppl 1:S45-53.

Hechter RC, Chao C, Li Q, Jacobsen SJ, Tseng HF. Second-dose varicella vaccination coverage in children and adolescents in a managed care organization in California, 2006-2009. *Pediatr Infect Dis J*. 2011;30:705-707.

Heller MM, Wu JJ, Murase JE. Fatal case of disseminated BCG infection after vaccination of an infant with in utero exposure to infliximab. *J Am Acad Dermatol*. 2011;65:870.

Hormozi J, Lee S, Hong DK. Minimal invasive percutaneous bipolar radiofrequency for plantar fasciotomy: a retrospective study. *J Foot Ankle Surg*. 2011;50:283-286.

Jacobsen SJ, Poland GA. Methods in vaccine effectiveness and safety studies: A critical need for vaccine confidence. *Vaccine*. 2011;29:9573-4.

Lee GM, Greene SK, Weintraub ES, Baggs J, Kulldorff M, Fireman BH, Baxter R, Jacobsen SJ, Irving S, Daley MF, Yin R, Naleway A, Nordin JD, Li L, McCarthy N, Vellozzi C, Destefano F, Lieu TA. H1N1 and seasonal influenza vaccine safety in the Vaccine Safety Datalink project. *Am J Prev Med*. 2011;41:121-128.

McCarthy NL, Gee J, Weintraub E, Donahue JG, Nordin JD, Daley MF, Naleway A, Henninger M, Baxter R, Crane B, Aukes L, Wagner N, Fisher S, Jacobsen SJ, Sy L, Baggs J. Monitoring vaccine safety using the Vaccine Safety Datalink: utilizing immunization registries for pandemic influenza. *Vaccine*. 2011;29:4891-4896.

Schatz M, Chambers CD, Jones KL, Louik C, Mitchell AA. Safety of influenza immunizations and treatment during pregnancy: the Vaccines and Medications in Pregnancy Surveillance System. *Am J Obstet Gynecol*. 2011;204:S64-8.

Tseng HF, Smith N, Harpaz R, Bialek SR, Sy LS, Jacobsen SJ. Herpes zoster vaccine in older adults and the risk of subsequent herpes zoster disease. *JAMA*. 2011;305:160-166.

Tseng HF, Smith N, Sy LS, Jacobsen SJ. Evaluation of the incidence of herpes zoster after concomitant administration of zoster vaccine and polysaccharide pneumococcal vaccine. *Vaccine*. 2011;29:3628-3632.

Women's Health

Catalano PM, Sacks DA. Timing of indicated late preterm and early-term birth in chronic medical complications: diabetes. *Semin Perinatol*. 2011;35:297-301. PMID: 3185292.

Menefee SA, Dyer KY, Lukacz ES, Simsiman AJ, Lubner KM, Nguyen JN. Colporrhaphy compared with mesh or graft-reinforced vaginal paravaginal repair for anterior vaginal wall prolapse: a randomized controlled trial. *Obstet Gynecol*. 2011;118:1337-1344.

Munro MG. Uterine leiomyomas, current concepts: pathogenesis, impact on reproductive health, and medical, procedural, and surgical management. *Obstet Gynecol Clin North Am*. 2011;38:703-731.

Munro MG, Behling DP. Virtual reality uterine resectoscopic simulator: face and construct validation and comparative evaluation in an educational environment. *JSL*. 2011;15:142-146. PMID: 3148859.

Munro MG, Broder M, Critchley HO, Matteson K, Haththotuwa R, Fraser IS. An international response to questions about terminologies, investigation, and management of abnormal uterine bleeding: use of an electronic audience response system. *Semin Reprod Med*. 2011;29:436-445.

Munro MG, Critchley HO, Broder MS, Fraser IS. FIGO classification system (PALM-COEIN) for causes of abnormal uterine bleeding in nonpregnant women of reproductive age. *Int J Gynaecol Obstet*. 2011;113:3-13.

Munro MG, Dickersin K, Clark MA, Langenberg P, Scherer RW, Frick KD. The Surgical Treatments Outcomes Project for Dysfunctional Uterine Bleeding: summary of an Agency for Health Research and Quality-sponsored randomized trial of endometrial ablation versus hysterectomy for women with heavy menstrual bleeding. *Menopause*. 2011;18:445-452.

Munro MG, Heikinheimo O, Haththotuwa R, Tank JD, Fraser IS. The need for investigations to elucidate causes and effects of abnormal uterine bleeding. *Semin Reprod Med*. 2011;29:410-422.

Ouzounian JG, Miller DA, Hiebert CJ, Battista LR, Lee RH. Vaginal birth after cesarean section: risk of uterine rupture with labor induction. *Am J Perinatol*. 2011;28:593-596.

Shin J, Cheetham TC, Wong L, Niu F, Kass E, Yoshinaga MA, Sorel M, McCombs JS, Sidney S. The impact of the iPLEDGE program on isotretinoin fetal exposure in an integrated health care system. *J Am Acad Dermatol*. 2011;65:1117-1125.

Other Topics

Avila CC, Quinn VP, Geiger AM, Kerby TJ, St Charles M, Clough-Gorr KM. Webinar Training: an acceptable, feasible and effective approach for multi-site medical record abstraction: the BOWI experience. *BMC Res Notes*. 2011;4:430. PMCID: 3213762.

Black MH, Watanabe RM. A principal components-based clustering method to identify variants associated with complex traits. *Hum Hered*. 2011;71:50-58. PMCID: 3089426.

Bota RG, Ligasan AP, Najdowski TG, Novac A. Acute hypersensitivity syndrome caused by valproic acid: a review of the literature and a case report. *Perm J*. 2011;15:80-84. PMCID: 3140754.

Bouhaddou O, Bennett J, Cromwell T, Nixon G, Teal J, Davis M, Smith R, Fischetti L, Parker D, Gillen Z, Mattison J. The Department of Veterans Affairs, Department of Defense, and Kaiser Permanente Nationwide Health Information Network exchange in San Diego: patient selection, consent, and identity matching. *AMIA Annu Symp Proc*. 2011;2011:135-143. PMCID: 3243253.

Bui T. Effectively training the hospice and palliative medicine physician workforce for improved end-of-life health care in the United States. *Am J Hosp Palliat Care*. 2011.

Crawford CL, Johnson JA, Valdez RM. An innovative communication model to disseminate information. *J Nurs Care Qual*. 2011;26:144-150.

Daniel CR, Cross AJ, Koebnick C, Sinha R. Trends in meat consumption in the USA. *Public Health Nutr*. 2011;14:575-583. PMCID: 3045642.

Dierkes D. Deployment to Afghanistan: perioperative nursing outside the comfort zone. *AORN J*. 2011;94:271-278.

Fan JW, Friedman C. Deriving a probabilistic syntacto-semantic grammar for biomedicine based on domain-specific terminologies. *J Biomed Inform*. 2011;44:805-814. PMCID: 3172402.

Fan JW, Prasad R, Yabut RM, Loomis RM, Zisook DS, Mattison JE, Huang Y. Part-of-speech tagging for clinical text: wall or bridge between institutions? *AMIA Annu Symp Proc*. 2011;2011:382-391. PMCID: 3243258.

Havens C, Mallin J. Climate Change: It's not about the weather-continuing medical education and maintenance of certification and licensure. *Perm J*. 2011;15:88-92. PMCID: 3200108.

Hughes RT, Trantham P. When Disaster Strikes, Humanity Becomes our Patient. *Perm J*. 2011;15:e118-122. PMCID: 3200110.

Jones BE, Jones J, Bewick T, Lim WS, Aronsky D, Brown SM, Boersma WG, van der Eerden MM, Dean NC. CURB-65 pneumonia severity assessment adapted for electronic decision support. *Chest*. 2011;140:156-163. PMID: 3198487.

Kagan AR, DeHaan ML. Director of residency training, do your job! *Am J Clin Oncol*. 2011;34:217-218.

Kiley ML, Paxton E, Maas K. Registries revolutionize care and outcomes. *Biomed Instrum Technol*. 2011;45:126-129.

Kim KH. Inferno. *Perm J*. 2011;15:81. PMID: 3048644.

Lazarus IR. On the road to find out...transparency and just culture offer significant return on investment. *J Healthc Manag*. 2011;56:223-227.

Lazarus IR. What will it take? Exploiting trends in strategic planning to prepare for reform. *J Healthc Manag*. 2011;56:89-93.

Lazarus IR, Fell D. Innovation or stagnation? Crossing the creativity gap in healthcare. *J Healthc Manag*. 2011;56:363-367.

Marciniuk DD, Goodridge D, Hernandez P, Rocker G, Balter M, Bailey P, Ford G, Bourbeau J, O'Donnell DE, Maltais F, Mularski RA, Cave AJ, Mayers I, Kennedy V, Oliver TK, Brown C. Managing dyspnea in patients with advanced chronic obstructive pulmonary disease: a Canadian Thoracic Society clinical practice guideline. *Can Respir J*. 2011;18:69-78. PMID: 3084418.

Mieras JN, Singleton TJ, Barrett SL. Contralateral peak plantar pressures with a postoperative boot: a preliminary study. *J Am Podiatr Med Assoc*. 2011;101:127-132.

Pearlman PJ. Haiti journal. *Perm J*. 2011;15:87. PMID: 3048650.

Rubin A. ACSM Clinician Profile. *Curr Sports Med Rep*. 2011;10:55.

Salahuddin M, James LA, Bass ES. SCUBA medicine: a first-responder's guide to diving injuries. *Curr Sports Med Rep*. 2011;10:134-9.

Schilling L, Dearing JW, Staley P, Harvey P, Fahey L, Kuruppu F. Kaiser Permanente's performance improvement system, Part 4: Creating a learning organization. *Jt Comm J Qual Patient Saf*. 2011;37:532-543.

Su JK. Bioenergetics of exercise and training. Micheli LJ, ed. Encyclopedia of Sports Medicine. Vol. 1. Thousand Oaks, CA: SAGE Publications. 2011.

Thompson DL. An integrated system for disaster preparedness and response. *J Bus Contin Emer Plan*. 2011;5:118-127.

Cover credits

Main: Donald Fong, MD, MPH, at the 2011 Los Angeles Triathlon. *Photo by Jeff Cutting, Kaiser Permanente Multimedia Communications, 2011.*

Lower left: Reina Haque, PhD, MPH, Joanie Chung, MPH, and Chantal Avila, MA, in front of scientific poster at the Department of Research & Evaluation. *Photo by Anthony Shepard, freelance photographer, 2011.*

Lower middle: Girls playing on a swing. *Stock image. ©iStockphoto/Eileen Hart.*

Lower right: Francine Morash, RN, Angela Scott, RN, Albert Shen, MD, MS, and Ty Knowles at the Kaiser Permanente Los Angeles Medical Center. *Photo by Anthony Shepard, freelance photographer, 2011.*

Produced by the Department of Research & Evaluation in collaboration with Quon Design + Communications.

Kaiser Permanente **Research**

Research Communications
Department of Research & Evaluation
Kaiser Permanente Southern California
100 South Los Robles, 6th Floor
Pasadena, CA 91101

For more information, contact research-communications@kp.org

Produced in October 2012.